

INDIAN AFFAIRS AND NORTHERN DEVELOPMENT LIBRARY  
BIBLIOTHÈQUE DES AFFAIRES INDIENNES ET DU NORD CANADIEN

UNIVERSITY OF CALIFORNIA, LOS ANGELES

DEPARTMENT OF ANTHROPOLOGY

ARCHAEOLOGICAL SURVEY ANNUAL REPORT

Volume 7

1965

✓ Harrison, William M.

"Mikiw: A Coastal Chumash Village" (pp. 91-178)

Editor

Donald S. Miller

Assistant Editors

Joseph Chartkoff  
Josephine Silva

Contributing Editors

M. Kowta  
Claude N. Warren

occur as decoration on the exterior of one rim and two body sherds (Fig. 4d); the fabric appears to be a plain weave and loom woven. Rim profiles are illustrated with the respective sherds in Fig. 4; however, the fragments are too small and too irregular to determine the size and shape of the whole vessel. Two red smudged rims are flat and one is convex in profile. The single textile impressed and one plainware rim are convex; four other plainware rims are flat.

The following table gives the measurements of body sherd thicknesses:

Sherd Type	Minimum (cm)	Maximum (cm)
Mexican Glaze Ware	0.45	0.8
Majolica Ware	0.4	0.7
Majolica Ware (Red Slipped)	0.5	1.0
Porcelain	---	0.4
Indian (Desert Ware)	0.4	0.7
Indian (Red Smudged)	0.9	1.2
Indian (Textile Impressed)	0.6	0.8
Indian (Plainware)	0.5	0.8

Glass Beads. A total of 491 glass beads were recovered from these excavations, and can be divided into five distinct types. Size is indicated by the fact that all but seven passed through the 1/4-inch screen and were recovered in the lower 1/8-inch one.

Type I: The most common bead (247) is nearly spherical; viewed from the perforated ends it appears circular, but when viewed in profile it appears somewhat oval (Fig. 5). The vast majority range in color from dark blue to turquoise to bright green; however, 26 are white and 11 range from a rust color to bright red.



Figure 5



Figure 6

Type II: This type, which is represented by 230 specimens, is a short tubular bead. It is circular when viewed from either end, but rectangular in profile (Fig. 6). Many appear to be cut from a glass rod; in many instances the severed end slants across the perforated surface. All of these range from dark blue through turquoise to dark green, with the majority being closer to the blue end of the spectrum.

Type III: Four examples of this type are elongated tubular beads, ranging up to 1.0 cm in length. Although they are circular when seen from either end, they are oval to rectangular in profile (Fig. 7). They range from rust to red in color and all are wrapped with a thin, gold, threadlike material.



Figure 7



Figure 8

Type IV: Only two examples of this type were recovered. They are characterized as elongated, rectangular, tubular beads. They are rectangular when viewed from the perforated end, and one is rectangular in profile while the other is oval (Fig. 8). Both are of red glass and nearly as long as Type III beads.

Type V: These eight specimens are similar to Type I beads in shape, but are slightly larger in size; however, all of them fall within the size variation of Type I. Type V beads are made with a double rod, the interior one being milky white and the exterior one red (Fig. 9).



Figure 9

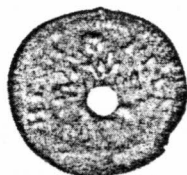


Figure 10

Broken Glass. A total of 24 pieces of glass was found at Mikiw. Twenty-one are simply pieces of broken glass. A dark green specimen has two parallel ridges, and a curvature characteristic of a wine bottle neck (Fig. 10); curvatures on the additional body fragments suggest these are also from bottles. Including the neck fragment, 15 are dark green, 5 are clear, and one is amber. Three Indian artifacts, two retouched flake scrapers and one projectile point fragment, are made of green glass.

Metal Artifacts. A rather wide range of metal artifacts is included in the 46 specimens recovered, many of which are represented by a single specimen.

A single metal coin was found. The periphery of one surface is serrated, and a floral design, together with the inscription "RECH PFEN", occur on the same surface (Fig. 11a). The inscription suggests a Germanic, possibly Dutch, origin. Although a design and inscription occur on the reverse surface, neither can be identified with a 20x lens. A small hole is punched through the center of the coin.



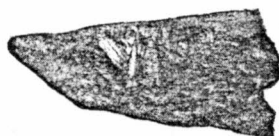
a

One silver button, circular in outline with a diameter of 1.1 cm, has a broken eyelet for an attachment on the inner surface. The exterior, or outer surface, bears no design or inscription.

Three highly corroded, iron fishhooks were found. On each, the shank is straight and the hook portion is circular (Fig. 11b). Although grooves, notches, or eyelets for attachment cannot be discerned on the shanks, their absence may be attributed to the extensive corrosion. Shaft lengths average 3.0 cm.



b



c



d

Figure 11 (a-d)

A small, brass knife blade exhibits two sharp edges and the pointed end (Fig. 11c). Although the base is missing, a section of drilled hole can be seen on the broken edge. The broken length is 3.9 cm and its width is 1.9 cm.

Two corroded iron specimens may be fragments of keys. Each possesses an elongated section with a wider perforated section at one end (Fig. 11d); the opposite end is missing on both specimens.

TABLE 3

ARTIFACT DISTRIBUTION FOR MISSION AND PRE-MISSION PHASES OF  
MIKIW (SBa-78)

KEY: # = Number    % = Percent    F = Frequency per cu. yard

Artifact Type	Mission			Pre-Mission			Site	
	#	%	F	#	%	F	#	F
<b>Historic:</b>								
<b>Ceramics:</b>								
Mexican Glaze	31	84	.3698	6	16	.1554	37	.3022
Majolica	26	93	.3102	2	7	.0518	28	.2287
Porcelain	1	100	.0119	-	-	-	1	.0881
Indian Sherds	52	98	.6205	1	2	.0529	53	.4330
Total	110	92	1.3126	9	8	.2331	119	.9722
<b>Glass Beads:</b>								
I	219	89	2.6133	28	11	.7253	247	2.0179
II	223	97	2.6610	7	3	.1813	230	1.8790
III	4	100	.0477	-	-	-	4	.0326
IV	2	100	.0238	-	-	-	2	.0163
V	8	100	.0954	-	-	-	8	.0653
Total	456	93	5.4415	35	7	.9067	491	4.0114
Broken Glass:	23	96	.2744	1	4	.0259	24	.1960
<b>Metal Artifacts:</b>								
Coin	1	100	.0119	-	-	-	1	.0081
Silver Button	1	100	.0119	-	-	-	1	.0081
Iron Fishhooks	2	66	.0238	1	33	.0259	3	.0245
Brass Knife	1	100	.0119	-	-	-	1	.0081
Keys (?)	2	100	.0238	-	-	-	2	.0163
Brass Ornament (?)	1	100	.0119	-	-	-	1	.0081
Copper Pin	1	100	.0119	-	-	-	1	.0081
Iron Nails	5	63	.0596	3	37	.0777	8	.0653
Iron Bolts	2	100	.0238	-	-	-	2	.0163
Straight Wire	13	93	.1551	1	7	.0259	14	.1143
Barbed Wire	1	50	.0119	1	50	.0259	2	.0163
Unid. Iron	8	100	.0954	-	-	-	8	.0653
Unid. Lead	2	100	.0238	-	-	-	2	.0163
Total	40	87	.4773	6	13	.1554	46	.3758
Total Historic Artifacts	629	93	7.5059	51	7	1.3212	680	5.5555