

THE BAYOU GOULA SITE
IBERVILLE PARISH, LOUISIANA

GEORGE I. QUIMBY

Curator, North American Archaeology and Ethnology

FIELDIANA: ANTHROPOLOGY

VOLUME 47, NUMBER 2

Published by

CHICAGO NATURAL HISTORY MUSEUM

FEBRUARY 26, 1957

IV. European Trade Objects

In the historic levels of the site European trade objects were found in association with artifacts of native manufacture. These trade objects consisted of beads, pipes, weapons, china, glassware, utensils, tools, and other items in demand among the Indians of the lower Mississippi Valley during the years from ca. 1700 to 1750.

TRADE BEADS

Le Page du Pratz, in speaking of the Indians of the lower Mississippi Valley ca. 1718-30, describes the trade beads as follows: "When they have beads (rassade) they make necklaces composed of one or many rows. They make them long enough for the head to pass through. The rassade is a bead of the size of the end of the finger of a small infant. Its length is greater than its diameter. Its substance is similar to porcelain. There is a smaller one, ordinarily round and white. They value it more than the other. There is a blue and one of another style which is banded (bardeles) with blue and white. The medium sized and smallest are strung to ornament skins, garters, etc." (Swanton, 1911, p. 56.)

Beads such as Du Pratz described, as well as other styles of beads, presumably traded to the Indians by the French, were found at the site (fig. 46).

GLASS BOTTLES

Glass bottles of at least two types were represented among the fragments found at the site. One type, the so-called "Dutch gin" bottle, was indicated by fragments of one specimen. It had a rectanguloid body, a concave bottom with a prominent pontil mark, and a short, round neck with an appliqué ring of glass on the outside of the neck about a centimeter beneath the mouth. The neck was twisted and the lip sheared. The bottle was made of translucent green bubble glass.

Another type, popularly called a "rum bottle," was represented by fragments of two or more specimens (fig. 47). This type consists of a cylindrical bottle with a concave bottom and a long, tapering neck with an appliqué ring of glass encircling the neck about a centimeter beneath the lip. The

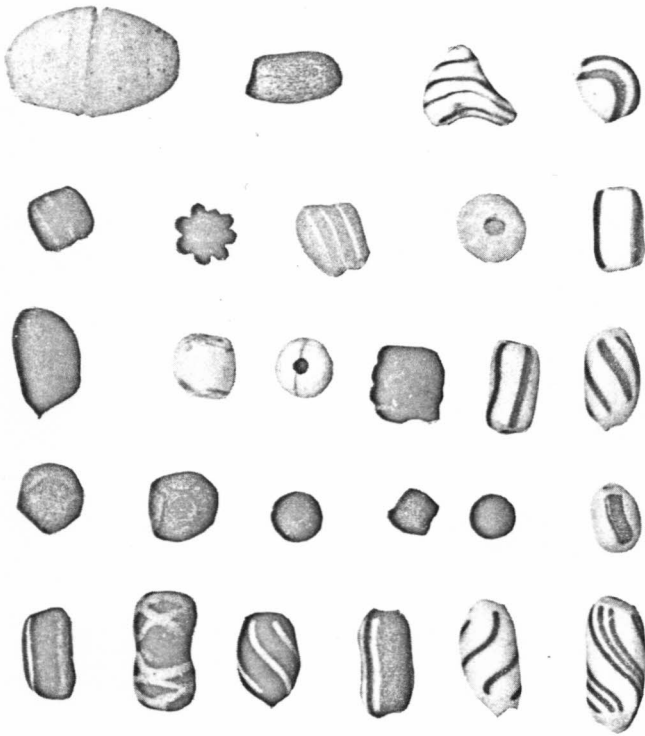


FIG. 46. European trade beads.

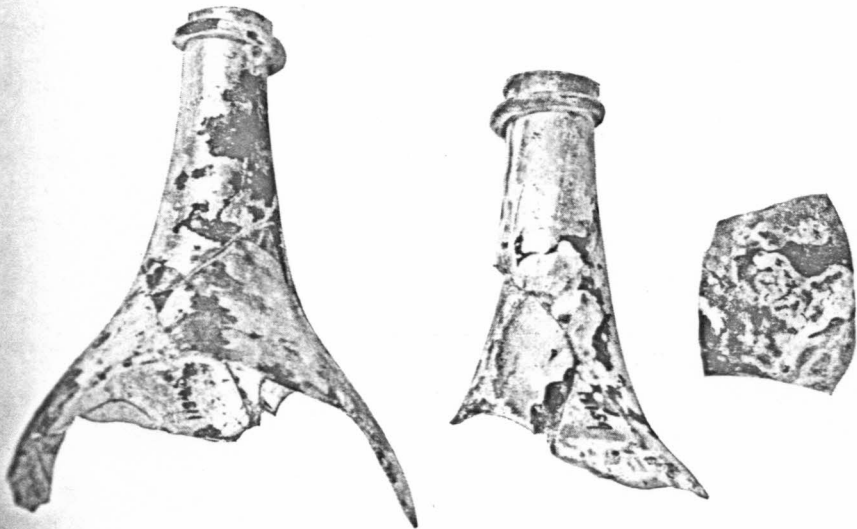


FIG. 47. European bottle fragments.