



344.

NEZ PERCE GRAVE REMOVAL PROJECT: A PRELIMINARY REPORT

by

Michael J. Rodeffer

and

Stephanie Holschlag Rodeffer

with

Roderick Sprague

Department of Sociology/Anthropology
University of Idaho
Moscow, Idaho

1972

LIST OF TABLES

| Table | | Page |
|-------|--|------|
| 1. | Trade Beads from Burial 6, 45WT65B | 10 |
| 2. | Tool Kit Associated with Burial 17, 45WT101B | 29 |
| 3. | Burial Characteristics of 45WT101B | 42 |
| 4. | Trade Beads from Burial 4, 45AS81B | 53 |
| 5. | Trade Beads from Burial 5, 45AS81B | 54 |
| 6. | Trade Beads from Burial 9, 45AS81B | 57 |
| 7. | Trade Beads from Burial 11, 45AS81B | 58 |
| 8. | Trade Beads from Burial 13, 45AS81B | 59 |
| 9. | Trade Beads from Burial 14, 45AS81B | 60 |
| 10. | Trade Beads from Burial 16, 45AS81B | 61 |
| 11. | Trade Beads from Burial 18, 45AS81B | 66 |
| 12. | Trade Beads from Burial 21, 45AS81B | 69 |
| 13. | Trade Beads from Burial 39, 45AS81B | 73 |
| 14. | Trade Beads from Burial 43, 45AS81B | 75 |
| 15. | Trade Beads from Burial 45, 45AS81B | 77 |
| 16. | Trade Beads from Burial 47, 45AS81B | 79 |
| 17. | Trade Beads from Burial 48, 45AS81B | 79 |
| 18. | Trade Beads from Burial 52, 45AS81B | 82 |
| 19. | Trade Beads from Burial 53, 45AS81B | 84 |
| 20. | Trade Beads from Burial 56, 45AS81B | 90 |
| 21. | Trade Beads from Burial 64, 45AS81B | 92 |
| 22. | Trade Beads from Burial 65, 45AS81B | 93 |
| 23. | Trade Beads from Burial 67, Thorax, 45AS81B | 96 |
| 24. | Trade Beads from Burial 74A, 45AS81B | 101 |
| 25. | Trade Beads from Burial 84, 45AS81B | 105 |
| 26. | Trade Beads from Burial 86, 45AS81B | 112 |
| 27. | Trade Beads from Burial 89, 45AS81B | 115 |

TABLE 1. --Trade Beads from Burial 6
 NISQUALLY JOHN TALUS SITE (45WT65B), WASH.
 ca. 1840 - ca. 1880

| Type | Shape | Diameter (mm) | Glass | Color | Total | Locus |
|---------------|----------|------------------|-------------|---------|------------|-------------|
| Tubular drawn | Circular | 2.5 | Translucent | 2.5B4/6 | 25 | Left wrist |
| Tubular drawn | Circular | 3 | Translucent | 2.5B4/6 | 158 | Left wrist |
| Tubular drawn | Circular | 4 | Translucent | 2.5B4/6 | 4 | Left wrist |
| Tubular drawn | Circular | 3 | Opaque | N9.5/0 | 1 | Left wrist |
| Wire wound | Circular | 6 | Translucent | 7.5B3/6 | 6 | Left wrist |
| Wire wound | Circular | 8.5 | Opaque | 5B5/4 | 1 | Left wrist |
| | | | | | <u>195</u> | |
| Tubular drawn | Circular | 2.5 | Translucent | 2.5B4/6 | 29 | Rt. wrist |
| Tubular drawn | Circular | 3 | Translucent | 2.5B4/6 | 400 | Rt. wrist |
| Tubular drawn | Circular | 3 | Translucent | 5PB2/6 | 1 | Rt. wrist |
| Tubular drawn | Circular | 3 | Opaque | N9.5/0 | 1 | Rt. wrist |
| Wire wound | Circular | 6 | Translucent | 7.5B3/6 | 3 | Rt. wrist |
| Wire wound | Circular | 9 | Opaque | 5B5/4 | 1 | Rt. wrist |
| | | | | | <u>435</u> | |
| Tubular drawn | Circular | 3 | Opaque | N9.5/0 | 1 | Skull |
| Tubular drawn | Circular | 2.5 | Translucent | 2.5B4/6 | 69 | Skull |
| Tubular drawn | Circular | 3 | Translucent | 2.5B4/6 | 470 | Skull |
| Tubular drawn | Circular | 4 | Translucent | 2.5B4/6 | 1 | Skull |
| Tubular drawn | Circular | 3 | Opaque | 5B5/4 | 1 | Skull |
| Tubular drawn | Circular | 6 | Opaque | 5B5/4 | 1 | Skull |
| Tubular drawn | Circular | 8 | Opaque | 5G6/6 | 1 | Skull |
| Wire wound | Tubular | 7 | Opaque | 5B5/4 | 2 | Skull |
| Wire wound | Circular | 6 | Translucent | 7.5B3/6 | 75 | Skull |
| Wire wound | Circular | 5 | Opaque | 5B5/4 | 2 | Skull |
| Wire wound | Circular | 7 | Opaque | 5B5/4 | 2 | Skull |
| Wire wound | Circular | 8 | Opaque | 5B5/4 | 1 | Skull |
| Wire wound | Circular | 9 | Opaque | 5B5/4 | 15 | Skull |
| | | | | | <u>641</u> | |
| Tubular drawn | Circular | 2.5 | Translucent | 2.5B4/6 | 24 | Torso |
| Tubular drawn | Circular | 3 | Translucent | 2.5B4/6 | 379 | Torso |
| Tubular drawn | Circular | 4 | Translucent | 2.5B4/6 | 1 | Torso |
| Wire wound | Tubular | 7 | Opaque | 5B5/4 | 3 | Torso |
| Wire wound | Circular | 6 | Translucent | 7.5B3/6 | 33 | Torso |
| Wire wound | Circular | 5.5 | Opaque | 5B5/4 | 8 | Torso |
| Wire wound | Circular | 7.5 | Opaque | 5B5/4 | 4 | Torso |
| Wire wound | Circular | 9 | Opaque | 5B5/4 | 12 | Torso |
| | | | | | <u>464</u> | |
| Tubular drawn | Circular | 3 | Translucent | 2.5B4/6 | 4 | SE of skull |
| Wire wound | Tubular | 7 | Opaque | 5B5/4 | 5 | SE of skull |
| Wire wound | Circular | 5 | Opaque | 5B5/4 | 62 | SE of skull |
| Wire wound | Circular | 7 | Opaque | 5B5/4 | 14 | SE of skull |
| Wire wound | Circular | 9 | Opaque | 5B5/4 | 37 | SE of skull |
| | | | | | <u>122</u> | |

ALPAWEYMA BURIAL SITE (45AS81B), WASH.

TABLE 4: --Trade Beads from Burial 4

ALPAWEYMA V (coffin) - ca. 1862 - ca. 1880

| Type | Shape | Diameter (mm) | Glass | Color | Total |
|-----------------------------|----------|------------------|-------------|--------------------------|-------|
| Tubular drawn | Circular | 2.5 | Translucent | N9.5/0 | 1 |
| Tubular drawn | Circular | 3 | Opaque | N9.5/0 | 1050 |
| Tubular drawn | Circular | 4 | Opaque | N9.5/0 | 54 |
| Tubular drawn | Circular | 2.5 | Opaque | 2.5R7/6 | 40 |
| Tubular drawn | Circular | 8 | Translucent | 5YR4/6 | 2 |
| Tubular drawn | Circular | 8 | Translucent | 5YR4/6 | 8 |
| | | | | painting N9.5/0 | |
| Tubular drawn | Circular | 5.5 | Translucent | 5R3/10 | 7 |
| Tubular drawn | Round | 10 | Translucent | 7.5PB4/4 | 1 |
| Tubular drawn | Faceted | 5 | Translucent | 2.5PB3/4 | 3 |
| Tubular drawn | Faceted | 6 | Translucent | 10BG5/6 | 3 |
| Tubular drawn | Faceted | 6 | Translucent | 5G3/6 | 1 |
| Tubular drawn | Faceted | 6.5 | Translucent | 10YR3/2 | 1 |
| Tubular drawn | Faceted | 6.5 | Translucent | Unknown | 2 |
| Tubular drawn | Faceted | 7 | Translucent | 7.5G4/4 | 1 |
| Tubular drawn | Oval | 6 | Opaque | N1/0 with stripes N9.5/0 | 2 |
| Tubular drawn, multilayered | Circular | 3 | Opaque | 7.5R5/6 / N8/0 | 103 |
| Tubular drawn, multilayered | Circular | 4 | Opaque | 7.5R5/6 / N8/0 | 163 |
| Tubular drawn, multilayered | Circular | 5 | Opaque | 7.5R5/6 / N8/0 | 48 |
| Wire wound | Oval | 5 | Opaque | N9.5/0 | 22 |
| Wire wound, multilayered | Oval | 6 | Opaque | N9.5/0 with cane 2.5R6/8 | 13 |
| Wire wound, multilayered | Oval | 9 | Opaque | N9.5/0 with cane 2.5R6/8 | 3 |
| Wire wound | Round | 10 | Opaque | 7.5G6/2 | 2 |
| Brass | Round | 7 | Opaque | Same size hole | 1 |
| Brass | Round | 8 | Opaque | Same size hole | 5 |
| Brass | Round | 9 | Opaque | Different size hole | 5 |
| Total: | | | | | 1531 |

terminated 44 cm. above the top of the burial box. The fill of this amateur excavation yielded some 600 trade beads, the source and associations of which are unknown.

The child, 4 to 6 years of age, was interred in a cedar post box 72 cm. E/W by 32 cm. N/S and 19 cm. deep with two subangular basalt cobbles subsequently placed on the lid. The top of the box sloped 3 cm. from west to east.

The well preserved remains were disturbed during excavation, but deposition was probably on the back and definitely in an extended position. Orientation of the burial was N85°W.

Grave goods directly associated with the burial included approximately 600 trade beads. Unfortunately, the beads recovered from the overlying pothole were inadvertently mixed with those from the burial during laboratory analysis. The combined totals are presented in Table 5. The inability to directly associate any of the beads with the burial, precludes even an estimation of the minimal initial date of the interment using them as an index.

TABLE 5. --Trade Beads from Burial 5

ALPAWEYMA IV - cedar box - ca. 1840 - ca. 1862

| Type | Shape | Diameter (mm) | Glass | Color | Total |
|--------------------------------|----------|------------------|-------------|------------------|-------|
| Tubular drawn | Faceted | 5 | Translucent | 5PB3/8 | 1 |
| Tubular drawn | Circular | 2 | Opaque | N9.5/0 | 11 |
| Tubular drawn | Circular | 2.5 | Opaque | N9.5/0 | 189 |
| Tubular drawn | Circular | 3 | Opaque | N9.5/0 | 10 |
| Tubular drawn | Circular | 4 | Opaque | N9.5/0 | 870 |
| Tubular drawn | Circular | 2.5 | Translucent | 2.5B5/8 | 16 |
| Tubular drawn | Circular | 3 | Translucent | 10B4/8 | 67 |
| Tubular drawn | Circular | 3 | Opaque | N1/0 | 24 |
| Tubular drawn | Circular | 3 | Opaque | 10YR6/8 | 27 |
| Tubular drawn | Circular | 2 | Translucent | 2.5PB3/4 | 7 |
| Tubular drawn | Circular | 2.5 | Opaque | 5G6/4 | 12 |
| Tubular drawn | Circular | 5 | Opaque | 7.5B3/6 | 1 |
| Tubular drawn, multilayered | Circular | 4 | Opaque | 5R5/10 / N8/0 | 1 |
| Total: | | | | | 1236 |

and 1.5 mm. in diameter, perhaps the fragment of an earring. The small size of the beads suggests their use in some form of garment ornamentation. A single core of cryptocrystalline material 52 mm. long, 40 mm. wide, and 14 mm. high with a heavy patina of calcium carbonate was recovered beneath the burial box and was probably derived from an underlying Cascade-Windust component.

TABLE 6. --Trade Beads from Burial 9

ALP. IV (box) - ca. 1840 - ca. 1862

| Type | Shape | Diameter (mm) | Glass | Color | Total |
|--------------------------------|----------|------------------|--------|------------------|-------|
| Tubular drawn | Circular | 2 | Opaque | N1/0 | 3 |
| Tubular drawn | Circular | 2 | Opaque | 2.5B6/6 | 15 |
| Tubular drawn, multilayered | Circular | 2 | Opaque | 5R4/10 / N8/0 | 1 |
| Tubular drawn, multilayered | Circular | 3 | Opaque | 5R4/10 / N8/0 | 3 |
| Total: | | | | | 21 |

Burial 10. The burial consisted of a few scattered remains of a child recovered from a pothole 120 cm. E/W by 85 cm. N/S. A single faceted dark navy (5PB3/8) tubular drawn trade bead, 5 mm. in diameter, and a utilized cryptocrystalline flake, 44 mm. long, 20 mm. wide, and 8.6 mm. thick, were removed from the fill of the pit. The paucity of skeletal material and artifacts suggests that they may have been redeposited in a barren pothole.

Burial 11. Burial 11 was contained within an elliptical pothole 130 cm. E/W by 100 cm. N/S undermined to 200 cm. at the northwest edge. This excavation destroyed most of the burial box and disarticulated the remains.

An adult male lay on a single board 122 cm. in length; the body was covered by unmilled planks 167 cm. long by 27 cm. wide. The burial lay between 118 cm. and 150 cm. below the surface. The periphery of the grave was marked by three stakes: one at the southeast corner, 120 cm. long; a second at the center of the south side, 49 cm. long; and a third at the west end of the pit, 15 cm. long and 6 cm. wide. Only the first two stakes reached the level of the bottom plank.

Deposition of the well-preserved remains was probably on the back in an extended position; placement of the arms and head could not be ascertained. Orientation of the burial, taken from the direction of

the single bottom plank, was N74°W. The sacrum and pelvis were piled in the southeastern portion of the pit; the skull was recovered from the west end. Both upper first molars had been lost before death.

Six trade beads, described in Table 7, were recovered from the fill of the pothole.

TABLE 7. --Trade Beads from Burial 11

ALP. IV - ca. 1840 - ca. 1862

| Type | Shape | Diameter (mm) | Glass | Color | Total |
|---------------|----------|------------------|-------------|--------|-------|
| Tubular drawn | Faceted | 5 | Translucent | 5PB3/8 | 1 |
| Tubular drawn | Circular | 2.5 | Opaque | N9.5/0 | 1 |
| Tubular drawn | Circular | 3 | Translucent | 5B4/8 | 1 |
| Tubular drawn | Circular | 8 | Translucent | 5G2/4 | 3 |
| Total: | | | | | 6 |

Burial 12. Excavation of an elliptical pit, 140 cm. E/W by 80 cm. N/S, demolished the burial box and disarticulated the skeleton of Burial 12. A slight surface depression denoted this previous digging by the relic collector and marked the location of the grave.

The remains of the cedar post box indicate that the lid, composed of five rough hewn planks laid lengthwise, extended at least 80 cm. beyond the west end board. The width of the burial box measured 60 cm. E/W; remnants of the lid and bottom were too fragmentary to obtain length and height measurements. Minimum width of the burial pit was 70 cm.

The skeletal remains consisted only of the mandible and less than ten bone fragments of an adult. Preservation was fair, but the position and mode of deposition of the body could not be ascertained.

Two non-utilized cryptocrystalline flakes were recovered from the fill one of which was coated with a heavy patina of calcium carbonate. This flake, 28.7 mm. long, 15.5 mm. wide, and 4 mm. thick, is probably from a Cascade-Windust component which underlies the site.

Burial 13. A shallow depression on the surface indicated the recent activities of a relic collector, and marked the grave of Burial 13. The excavation of the pothole, 120 cm. E/W by 90 cm. N/S and 60 cm. deep, completely destroyed the burial box and totally disturbed the remains.

Neither the size nor type of the box could be determined from the wood fragments scattered throughout the fill of the pothole. However, a single stake 147 cm. long, 4 cm. wide and 2 cm. thick marked the northwest end of the grave pit.

Only fragments of the cranium, the femora, tibiae, ulnae, and one rib of a child were recovered from the backfill of the pit. Deposition was probably on the back in an extended position; placement of the head and arms could not be determined. Orientation of the burial was S75°W.

Fourteen trade beads, described in Table 8, were found in the fill.

TABLE 8. --Trade Beads from Burial 13

ALP. IV - ca. 1840 - ca. 1862

| Type | Shape | Diameter (mm) | Glass | Color | Total |
|---------------|----------|------------------|-------------|--------|-----------|
| Tubular drawn | Circular | 3 | Translucent | 5B4/6 | 12 |
| Tubular drawn | Circular | 3 | Opaque | 10G8/4 | 1 |
| Tubular drawn | Circular | 4 | Opaque | N9.5/0 | 1 |
| Total: | | | | | <u>14</u> |

Burial 14. Excavation of a pothole 130 cm. E/W by 90 cm. N/S and 90 cm. deep destroyed the western third of the box containing Burial 14 and disturbed the skeleton from head to pelvis. A shallow pit marked these activities on the surface.

The cedar post box, 160 cm. E/W by 50 cm. N/S and 35 cm. deep, was constructed from either hand hewn rough sawed cedar or split posts 4 cm. wide and 1 cm. thick. The west end of the lid extended 25 cm. beyond the end of the box and no nails were used to secure the lumber. The grave pit prepared for the box measured approximately 185 cm. E/W by 80 cm. N/S and 124 cm. deep.

Deposition of the adult male was in an extended position on the back with the hands on the pelvis. Orientation was S53°W; preservation was excellent.

A total of 606 white tubular drawn trade beads and one black specimen were recovered from the fill of the pothole; 81 white beads were removed from the feet. A full description of these artifacts may be found in Table 9. The consistent association of small size beads

suggests that they may have been utilized for garment decoration. In addition, one translucent cryptocrystalline soft hammer flake with heavy carbonate patina, and one flake fragment were also found.

TABLE 9. --Trade Beads from Burial 14

ALP. IV - ca. 1840 - ca. 1862

| Type | Shape | Diameter (mm) | Glass | Color | Total |
|--------------------|----------|------------------|--------|--------|-------|
| Beads in fill: | | | | | |
| Tubular drawn | Circular | 2 | Opaque | N9.5/0 | 10 |
| Tubular drawn | Circular | 2.5 | Opaque | N9.5/0 | 144 |
| Tubular drawn | Circular | 3 | Opaque | N9.5/0 | 432 |
| Tubular drawn | Circular | 5 | Opaque | N9.5/0 | 19 |
| Tubular drawn | Circular | 4 | Opaque | N9.5/0 | 1 |
| Total: | | | | | 606 |
| Beads around feet: | | | | | |
| Tubular drawn | Circular | 2.5 | Opaque | N9.5/0 | 20 |
| Tubular drawn | Circular | 3 | Opaque | N9.5/0 | 57 |
| Tubular drawn | Circular | 4 | Opaque | N9.5/0 | 4 |
| Total: | | | | | 81 |

Burial 15. An adolescent female, 8 to 12 years of age, was interred in a sawed plank box 133 cm. E/W by 32 cm. N/S and 24 cm. deep. The coffin was constructed from single planks on all sides. The bottom, lid, and side boards overlapped the ends. The box was secured with square nails and was placed in a pit 148 cm. E/W by 43 cm. N/S, 73 cm. below the surface.

The well preserved remains were articulated in an extended position on the back with the arms folded across the chest. The fore-arms rested on the abdomen perpendicular to the body, the right on top. The head was looking forward; orientation of the burial was S60°W. No grave goods accompanied the individual.

Burial 16. A shallow surface depression indicated the location of the grave. The pothole, 110 cm. NW/SE by 95 cm. NW/SE, had destroyed the west end of the coffin. Although the remains had been disarticulated, it is uncertain whether the cause should be attributed to the amateur excavation or to natural disturbance.

An infant had been interred in a sawed plank box 70 cm. NE/SW by 36 cm. NW/SE and 20 cm. deep constructed of boards 12.7 cm. wide by 1.9 cm. thick (5" by 3/4"). The coffin was secured with square nails of which ten fragments were recovered. The box was placed in a pit 100 cm. NE/SW by 50 cm. NW/SE and 99 cm. below the surface.

Deposition of the poorly preserved remains was on the back in an extended position; placement of the arms and head could not be ascertained. Orientation was S66°W.

A variety of grave goods including 48 trade beads, 92 shell disk beads-5 mm. in diameter, two olivella shell beads-7 mm. in diameter, 1 hawk bell, 9 two-piece press brass buttons, 1 wire bracelet, 6 wound brass wire tubes, 2 shell pendants, 5 dimes and 2 half-dimes had been placed in the burial box. The range of trade beads is described in Table 10. Adjacent to the right leg but separated from each other by approximately 5 cm. lay two strings of four brass beads flanked by two large torous multilayered tubular drawn beads, redwood (5R4/10) over light gray (N8/0). The beads were strung on two strands of twisted leather, and the cotton material adhering to the reverse suggests their use as garment decoration. Four circular, tubular drawn

TABLE 10. --Trade Beads from Burial 16

ALP. V - ca. 1862 - ca. 1880

| Type | Shape | Diameter (mm) | Glass | Color | Total |
|--------------------------------|----------|------------------|-------------|------------------------|-------|
| Tubular drawn | Faceted | 4.5 | Translucent | 2.5PB3/6 | 6 |
| Tubular drawn | Faceted | 5.5 | Translucent | 2.5PB3/6 | 3 |
| Tubular drawn | Circular | 3 | Opaque | N1/0 | 7 |
| Tubular drawn | Circular | 4 | Opaque | N1/0 | 6 |
| Tubular drawn | Circular | 6 | Opaque | N1/0 | 1 |
| Tubular drawn | Circular | 7 | Opaque | N1/0 | 4 |
| Tubular drawn | Circular | 3 | Opaque | 2.5R7/6 | 2 |
| Tubular drawn | Circular | 3 | Opaque | 2.5R6/8 | 4 |
| Tubular drawn | Circular | 6 | Translucent | 5R4/10 | 6 |
| Tubular drawn, multilayered | Torous | 9 | Translucent | 5R4/10 / N8/0 | 6 |
| Tubular drawn, multilayered | Circular | 3 | Opaque | 5R4/10 / N8/0 | 9 |
| Tubular drawn, multilayered | Circular | 4 | Opaque | 5R4/10 / N8/0 | 49 |
| Tubular drawn, multilayered | Circular | 5 | Opaque | 5R4/10 / N8/0 | 2 |
| Brass | Round | 8 | -- | Same size hole | 8 |
| Brass | Round | 8 | -- | Different size hole | 1 |

Total:

114

destroyed the lid of the west end of the burial box and left only the left tibia, fibula, and foot and right foot in situ.

The body was interred 102 cm. below the surface in a trapezoidal sawed plank box 165 cm. long L/W, 33 cm. wide on the north end, 38 cm. wide on the south, and 17 cm. deep. The coffin was secured with square nails of which six whole specimens and fourteen fragments were recovered.

Deposition of the individual was on the back in an extended position; placement of the arms and head could not be determined. Orientation of the burial was N60°W.

The only grave goods recovered from the excavation, included a single cryptocrystalline utilized flake 21 mm. long, 12.1 mm. wide, and 11.6 mm. thick and 163 blue, black, and white trade beads. A full description of the beads is contained in Table 11. The small size of all the specimens suggests their use in some type of sewn decoration.

TABLE 11. --Trade Beads from Burial 18

ALP. IV - ca. 1840 - ca. 1862

| Type | Shape | Diameter (mm) | Glass | Color | Total |
|---------------|----------|------------------|-------------|--------|-------|
| Tubular drawn | Circular | 2 | Opaque | N9.5/0 | 23 |
| Tubular drawn | Circular | 2.5 | Opaque | N9.5/0 | 122 |
| Tubular drawn | Circular | 3 | Opaque | N1/0 | 1 |
| Tubular drawn | Circular | 2 | Translucent | 5B4/8 | 2 |
| Tubular drawn | Circular | 4 | Translucent | 5B4/8 | 15 |
| Total: | | | | | 163 |

Burial 19. The east edge of a large amateur excavation 140 cm. N/S by 130 cm. E/W and 95 cm. deep intersected and destroyed the west end of the coffin of Burial 19. Although the eastern 120 cm. of the burial box itself was undisturbed, the remains had all been removed from the coffin through the west end. A shallow depression on the surface denoted this recent activity.

The sawed plank box, 120 cm. thick and secured with square nails at intervals of 16 to 20 cm. Eleven complete nails and 5 fragments were recovered. A single stake 10 cm. wide and 2 cm. thick marked the east end of the burial pit, originally 164+ cm. E/W and 62 cm. N/S. The top of the coffin was 76 cm. below the surface.

An adult had been placed in the burial box in an extended position on the back oriented N80°W. Original placement of the arms and head had been disturbed.

White, blue, black, and green trade beads, numbering 435 as described in Table 12, were recovered beside the left leg and foot. The beads may have decorated moccasins or the lower part of leggings. In addition, three non-utilized flakes with a patina of calcium carbonate, probably from an underlying Cascade-Windust component, were recovered from the fill. One gun flint 19.4 mm. long, 16.4 mm. wide, and 6.1 mm. thick chipped from a dark gray cryptocrystalline material; a piece of slag encrusted with beads; and two small pieces of red ochre were also removed from the fill of the pothole.

TABLE 12. --Trade Beads from Burial 21

ALP. IV - ca. 1840 - ca. 1862

| Type | Shape | Diameter (mm) | Glass | Color | Total |
|---------------|----------|------------------|-------------|---------|-------|
| Tubular drawn | Faceted | 7 | Translucent | 5PB2/8 | 2 |
| Tubular drawn | Faceted | 6 | Translucent | 5G2/6 | 1 |
| Tubular drawn | Circular | 1.5 | Opaque | N9.5/0 | 2 |
| Tubular drawn | Circular | 2 | Opaque | N9.5/0 | 294 |
| Tubular drawn | Circular | 2.5 | Opaque | N9.5/0 | 20 |
| Tubular drawn | Circular | 3 | Opaque | N9.5/0 | 28 |
| Tubular drawn | Circular | 4 | Opaque | N9.5/0 | 1 |
| Tubular drawn | Circular | 1 | Translucent | N1/0 | 3 |
| Tubular drawn | Circular | 2.5 | Translucent | 7.5B4/8 | 3 |
| Tubular drawn | Circular | 3 | Translucent | 7.5B4/8 | 30 |
| Tubular drawn | Circular | 3 | Opaque | N1/0 | 71 |
| Tubular drawn | Circular | 3 | Opaque | 5BG6/4 | 1 |
| Total: | | | | | 435 |

Burial 22. This number was not utilized.

Burial 23. An elliptical pothole 135 cm. NW/SE by 75 cm. NE/SW, recently excavated by relic collectors intersected the west end of Burial 23 and destroyed a portion of the burial box which prevented an accurate measurement of the full length of the coffin. On the surface, a small pit filled with scattered wood fragments indicated the location of the grave.

The body of an adult male had been placed in a sawed plank box

edge by three holes 1.5 mm. in diameter.

Burials 37-38. These numbers were not utilized.

Burial 39. The amateur excavation of an area 120 cm. E/W by 80 cm. N/S which completely disturbed the grave of Burial 13 intersected the north edge of the grave pit of Burial 39 above the level of the remains. In addition, the northeast corner of the grave pit of Burial 46 was dug into the south central portion of the grave of Burial 39. Neither the digging of the pothole nor the aboriginal excavation disturbed the remains. Burial 39 was originally located by exposing the rocks of the cairn in the southern profile of the pothole that destroyed Burial 13, adjacent to and north of the inhumation.

A cairn composed of 13 angular basalt cobbles scattered over an area 130 cm. E/W by 72 cm. N/S was uncovered 65 cm. below the surface. Underneath the rock cover, four cedar boards 4 to 8 cm. wide covered the burial. The bottom of the elliptical pit, 170 cm. E/W by 70 cm. N/S, lay 75 cm. below the surface, and had been lined with cedar bark matting prior to the interment.

An adult, the remains of which were well preserved, had been laid on the back in a semi-flexed position with the legs collapsed to the left. The right arm was flexed to the left scapula, the left to the upper right side below the scapula. The head was looking forward with the mouth open. Orientation of the burial was N58°E. Arthritis of the spinal column was pronounced and the axis, third, and fourth cervical vertebrae had fused together. All upper teeth except the left second incisor had been lost before death.

Seven small fragments of leather were recovered in burial association, and eight beads, described in Table 13, were removed from the fill of the pit above the cairn.

TABLE 13. --Trade Beads from the Fill of Burial 39

ALP. II - (SEMI-FLEXED) - pre - 1800

| Type | Shape | Diameter | Glass | Color | Total |
|---------------|----------|----------|-------------|--------|-------|
| Tubular drawn | Circular | 3 | Opaque | N9.5/0 | 2 |
| Tubular drawn | Circular | 3 | Opaque | 5G6/6 | 1 |
| Tubular drawn | Circular | 3 | Translucent | 5B4/6 | 5 |
| Total: | | | | | 8 |

Burial 40. The skeleton of a newborn infant was found compressed

during excavation. The lid of the coffin, 106 cm. in maximum length and 52 cm. in maximum width, consisted of twelve boards 10 cm. wide and from 36 to 52 cm. long placed across the width of the box. A grave pit 125 cm. NW/SE by 54 cm. NE/SW and 84 cm. deep had been dug to accommodate the coffin.

A child had been placed in the box on the back in an extended position with the arms at the sides and the head looking slightly to the right. The individual was looking toward the right, away from the Snake River. Orientation was N40°W. Preservation of the remains was only fair and the pelvis had almost completely deteriorated.

TABLE 14. --Shell Disk and Trade Beads from Burial 43

ALP. V - ca. 1862 - ca. 1880

| Type | Shape | Diameter (mm) | Glass | Color | Total | Locus |
|---------------|----------|------------------|-------------|---------|------------|-------------|
| Tubular drawn | Circular | 2 | Opaque | N9.5/0 | 124 | Feet |
| Tubular drawn | Circular | 2.5 | Opaque | N9.5/0 | 11 | Feet |
| Tubular drawn | Circular | 3 | Opaque | N9.5/0 | 67 | Feet |
| Tubular drawn | Circular | 3 | Translucent | 5PB2/6 | 1 | Feet |
| Tubular drawn | Circular | 8 | Translucent | 5B3/6 | 1 | Feet |
| | | | | | <u>204</u> | |
| Tubular drawn | Faceted | 6 | Opaque | 5PB2/6 | 4 | Waist |
| Tubular drawn | Circular | 2 | Opaque | N9.5/0 | 3 | Waist |
| Tubular drawn | Circular | 2.5 | Opaque | N9.5/0 | 41 | Waist |
| Tubular drawn | Circular | 3 | Opaque | N9.5/0 | 34 | Waist |
| Tubular drawn | Circular | 3 | Opaque | N1/0 | 9 | Waist |
| Shell disk | | 5 | | | 1 | Waist |
| | | | | | <u>92</u> | |
| Tubular drawn | Faceted | 6 | Opaque | N1/0 | 23 | Upper chest |
| Tubular drawn | Faceted | 5 | Translucent | 5PB3 /8 | 1 | Upper chest |
| Tubular drawn | Faceted | 6 | Translucent | 5PB3/8 | 2 | Upper chest |
| Tubular drawn | Faceted | 6 | Translucent | 2.5R3/4 | 1 | Upper chest |
| Shell disk | | 5 | | | 15 | Upper chest |
| | | | | | <u>42</u> | |
| Tubular drawn | Faceted | 6 | Opaque | 5PB2/6 | 3 | Unknown |
| Tubular drawn | Faceted | 5 | Opaque | 5YR3/2 | 1 | Unknown |
| Tubular drawn | Circular | 2 | Opaque | N9.5/0 | 11 | Unknown |
| Tubular drawn | Circular | 3 | Opaque | N9.5/0 | 3 | Unknown |
| Wire wound | Faceted | 4 | Translucent | 5PB4/4 | 1 | Unknown |
| Shell disk | | 5 | | | 38 | Unknown |
| | | | | | <u>57</u> | |

Total:

385

evidenced spinal arthritis and the loss of all upper teeth except the canines and the left second incisor; lower right molars, lower left premolar, and second and third molars before death.

No grave goods accompanied the individual.

Burial 45. An adult was interred in a cedar post box 177 cm. E/W by 65 cm. N/S and 30 cm. deep buried 75 cm. below the surface. The lid was constructed from three rough posts 14 to 20 cm. wide and 2 to 5 cm. thick placed lengthwise over the box. The sides had been fabricated from posts 5 cm. thick. The grave pit, 216 cm. E/W by 110 cm. N/S, was marked on the east and west edge by end posts 7 cm. wide and 5 cm. thick.

The body had been placed on the back in an extended position with the right hand on the pelvis and the left over the upper thigh. The head was looking to the right; orientation was S86°W. The skull, mandible, right arm, ribs and hip, the lower left leg, and the distal end of the right femur were stained a micaceous purple and poorly preserved. These areas had been covered with leather and their relative positions suggest that the head and upper torso had been wrapped in leather, with possibly knee-high moccasins on the feet.

Two thousand two hundred ninety-seven white, black, blue, and green trade beads recovered from the lower limbs further suggest that the moccasins were decorated, as these are within the size range normally used for ornamentation of garments. A full description of the beads is contained in Table 15.

TABLE 15. --Trade Beads from Burial 45

ALP. IV - ca. 1840 - ca. 1862

| Type | Shape | Diameter (mm) | Glass | Color | Total |
|---------------|----------|------------------|-------------|---------|-------|
| Tubular drawn | Circular | 2 | Opaque | N9.5/0 | 1992 |
| Tubular drawn | Circular | 2.5 | Opaque | N9.5/0 | 120 |
| Tubular drawn | Circular | 3 | Opaque | N9.5/0 | 1067 |
| Tubular drawn | Circular | 4 | Opaque | N9.5/0 | 3 |
| Tubular drawn | Circular | 3 | Opaque | N1/0 | 3 |
| Tubular drawn | Circular | 2.5 | Opaque | 5BG6/4 | 1 |
| Tubular drawn | Circular | 3 | Translucent | 7.5B4/8 | 11 |
| Total: | | | | | 2297 |

Burial 46. The northwest corner of the grave pit of Burial 46

TABLE 16. --Trade Beads from Burial 47

ALP. IV - ca. 1840 - ca. 1862

| Type | Shape | Diameter (mm) | Glass | Color | Total |
|---------------|---------|------------------|-------------|--------|-------|
| Tubular drawn | Faceted | 5 | Translucent | 5PB3/6 | 4 |
| Tubular drawn | Faceted | 7 | Translucent | 5PB3/6 | 1 |
| Tubular drawn | Faceted | 5 | Translucent | 10G3/4 | 2 |
| Total: | | | | | 7 |

described in Table 17, two hawk bells, the remains of a leather belt with an iron buckle, and a pressure flake. The beads, recovered from the abdominal area, were knotted together by a leather thong and probably represent the remains of a bracelet.

TABLE 17. --Trade Beads from Burial 48

as above

| Type | Shape | Diameter (mm) | Glass | Color | Total |
|---------------|---------|------------------|-------------|-----------------------------|-------|
| Tubular drawn | Faceted | 7 | Translucent | 5PB2/6 | 4 |
| Tubular drawn | Faceted | 8 | Translucent | 5PB2/6 | 6 |
| Tubular drawn | Faceted | 10 | Translucent | 5PB2/6 | 6 |
| Tubular drawn | Faceted | 9 | Translucent | 5YR3/2 | 1 |
| Tubular drawn | Round | 11 | Opaque | 2.5PB3/4 | 12 |
| Tubular drawn | Round | 12 | Opaque | 5R4/6 | 1 |
| Wire wound | Round | 10 | Opaque | 2.5Y8/2 | 1 |
| Wire wound | Round | 10 | Opaque | N9.5/0 with 5PB2/6 spots | 1 |
| Wire wound | Round | 12 | Opaque | 2.5Y7/4 | 1 |
| Total: | | | | | 33 |

Two brass hawk bells, Type IB1 (Weatherford 1971:27), 13.8 mm. by 14.2 mm. in diameter and 15 mm. by 16 mm. in diameter, respectively, were removed from the bottom of the coffin adjacent to the burial. The first confirmed appearance of this type of trade bell was in 1850, although distribution of the item in the area may have been as

bone buttons were strung together on a piece of cotton fabric with the regular uniform button in the center. The green buttons were knotted together on one side and the vest button threaded on the other.

The largest military button is a regular uniform S-type (Fig. 13m), 23.4 mm. in diameter and 7.7 mm. thick. A Line Eagle device with an "A" recessed in a shield on the chest, the head of the bird facing the left raised wing, and three arrows clasped in the right talon and an olive branch in the left, appears on the obverse. The reverse reads:

TABLE 18. --Trade Beads from Burial 52

ALP. V - ca. 1862 - ca. 1880

| Type | Shape | Diameter (mm) | Glass | Color | Total |
|--------------------------------|----------|------------------|-------------|------------------|-------|
| Tubular drawn | Faceted | 5 | Translucent | 5PB3/6 | 15 |
| Tubular drawn | Faceted | 7 | Translucent | 5PB3/6 | 1 |
| Tubular drawn | Circular | 2 | Opaque | N9.5/0 | 7 |
| Tubular drawn | Circular | 2.5 | Opaque | N9.5/0 | 10 |
| Tubular drawn | Circular | 3 | Opaque | N9.5/0 | 948 |
| Tubular drawn | Circular | 2 | Translucent | 7.5B4/8 | 18 |
| Tubular drawn | Circular | 3 | Translucent | 7.5B4/8 | 232 |
| Tubular drawn | Circular | 2 | Opaque | 5G6/4 | 3 |
| Tubular drawn | Circular | 3 | Opaque | N1/0 | 28 |
| Tubular drawn | Circular | 4 | Opaque | N1/0 | 1 |
| Tubular drawn, multilayered | Circular | 3 | Opaque | 5R4/10 / N8/0 | 73 |
| Tubular drawn, multilayered | Circular | 4 | Opaque | 5R4/10 / N8/0 | 31 |
| Wire wound | Oval | 6 | Opaque | N9.5/0 | 3 |
| Wire wound | Oval | 9 | Translucent | 5R4/10 / | 1 |
| Wire wound | Faceted | 5.5 | Translucent | 5R4/10 / | 4 |
| Total: | | | | | 1375 |

"R & W Robinson Extra Rich." This trademark dates from 1836 to 1844 (Johnson 1948:218); however, this style of button was produced only from 1840 to 1854 (Johnson 1948:42). Therefore, this particular button could only have been manufactured between 1840 and 1844.

The smaller is a brass S-type military vest button (Fig. 13l), 14.9 mm. in diameter and 5.5 mm. thick. The Line Eagle device with an "R" recessed on a shield on the chest was embossed on the obverse. The eagle faced to the left, with the wings spread and raised, and the legs extended. Printing on the reverse reads: "SCOVILL & CO. Extra."

TABLE 19. --Trade Beads from Burial 53

A.L.P. IV - ca. 1840 - ca. 1862

| Type | Shape | Diameter (mm) | Glass | Color | Total | Locus |
|-----------------------------|----------|------------------|-------------|---|-------------|------------|
| Tubular drawn | Circular | 3 | Opaque | N9.5/0 | 96 | Rt. wrist |
| Tubular drawn | Circular | 4 | Opaque | N9.5/0 | 41 | Rt. wrist |
| Tubular drawn | Circular | 3 | Opaque | N1/0 | 30 | Rt. wrist |
| Tubular drawn | Circular | 4 | Opaque | N1/0 | 28 | Rt. wrist |
| Tubular drawn | Circular | 3 | Translucent | 5PB3/6 | 1 | Rt. wrist |
| Tubular drawn | Circular | 4 | Translucent | 5G3/4 | 40 | Rt. wrist |
| | | | | | <u>236</u> | |
| Tubular drawn | Circular | 3 | Opaque | N9.5/0 | 198 | Left wrist |
| Tubular drawn | Circular | 3 | Opaque | N1/0 | 61 | Left wrist |
| | | | | | <u>259</u> | |
| Tubular drawn | Circular | 2 | Opaque | N9.5/0 | 222 | Box |
| Tubular drawn | Circular | 2.5 | Opaque | N9.5/0 | 522 | Box |
| Tubular drawn | Circular | 3 | Opaque | N9.5/0 | 954 | Box |
| Tubular drawn | Circular | 4 | Opaque | N9.5/0 | 16 | Box |
| Tubular drawn | Circular | 2.5 | Opaque | N1/0 | 13 | Box |
| Tubular drawn | Circular | 3 | Opaque | N1/0 | 556 | Box |
| Tubular drawn | Circular | 4 | Opaque | N1/0 | 44 | Box |
| Tubular drawn | Circular | 3 | Translucent | 5PB3/6 | 23 | Box |
| Tubular drawn | Circular | 2.5 | Translucent | 5B4/6 | 8 | Box |
| Tubular drawn | Circular | 2 | Opaque | 2.5Y7/7 | 1 | Box |
| Tubular drawn, multilayered | Circular | 3 | Opaque | 5R4/10 / N8/0 | 12 | Box |
| Tubular drawn, multilayered | Circular | 4 | Opaque | 5R4/10 N8/0 | 1 | Box |
| | | | | | <u>2350</u> | |
| Wire wound | Oval | 7 | Opaque | N9/0 | 14 | Necklace 1 |
| Tubular drawn, multilayered | Tubular | 9 | Translucent | 5R4/10 / N8/0 | 2 | Necklace 2 |
| Tubular drawn, multilayered | Tubular | 11 | Translucent | 5R4/10 / N8/0 | 1 | Necklace 2 |
| Wire wound | Oval | 15 | Translucent | 5R4/8 | 3 | Necklace 2 |
| Wire wound | Oval | 15 | Translucent | 7.5PB2/8 | 1 | Necklace 2 |
| Wire wound | Oval | 12 | Translucent | 5R4/8 | 1 | Necklace 2 |
| Wire wound | Round | 14 | Translucent | 5R3/8 | 6 | Necklace 2 |
| | | | | | <u>28</u> | |
| Tubular drawn | Tubular | 10 | Opaque | 5G6/4 | 1 | Box |
| | | | | base with 3 candy-cane striped hori- zontal panels of white | | |

TABLE 19. --Continued

| Type | Shape | Diameter (mm) | Glass | Color | Total | Locus |
|---------------|----------|------------------|-------------|--|-------|-------|
| Tubular drawn | Tubular | 11 | Opaque | (N9.5/0) and red (5R3/10), enclosing a series of 3 black dots with white rims N9.5/0 base with spots of 7.5PB2/8 and 5R4/10 in alternating pattern | 1 | Box |
| Tubular drawn | Faceted | 6 | Translucent | 5R2/8 | 7 | Box |
| Tubular drawn | Faceted | 10 | Clear | 7.5YR7/2 | 1 | Box |
| Tubular drawn | Circular | 7 | Opaque | 5G6/6 | 1 | Box |
| Tubular drawn | Circular | 14 | Translucent | N9.5/0 | 1 | Box |
| Wire wound | Round | 13 | Opaque | N9/0, parallel undulating lines in 5R4/10 and 5G4/8. Green lines have buff spots at apexes, red have black spots | 4 | Box |
| Wire wound | Round | 8 | Opaque | N9/0, irregular and wavy lines in 2.5Y7/8 and 5G6/6. Incised parallel bands on surface. | 5 | Box |
| Wire wound | Circular | 10 | Opaque | N9.5/0, with 3 N1/0 stripes around bead | 1 | Box |
| Wire wound | Circular | 10 | Opaque | N9.5/0, with 3 2.5P4/4 stripes around bead | 1 | Box |
| Molded | Round | 12 | Translucent | 5R2/8, with leaves of N9.5/0 and 5BG5/8 dots | 4 | Box |
| | | | | | 27 | |
| Total: | | | | | 2932 | |

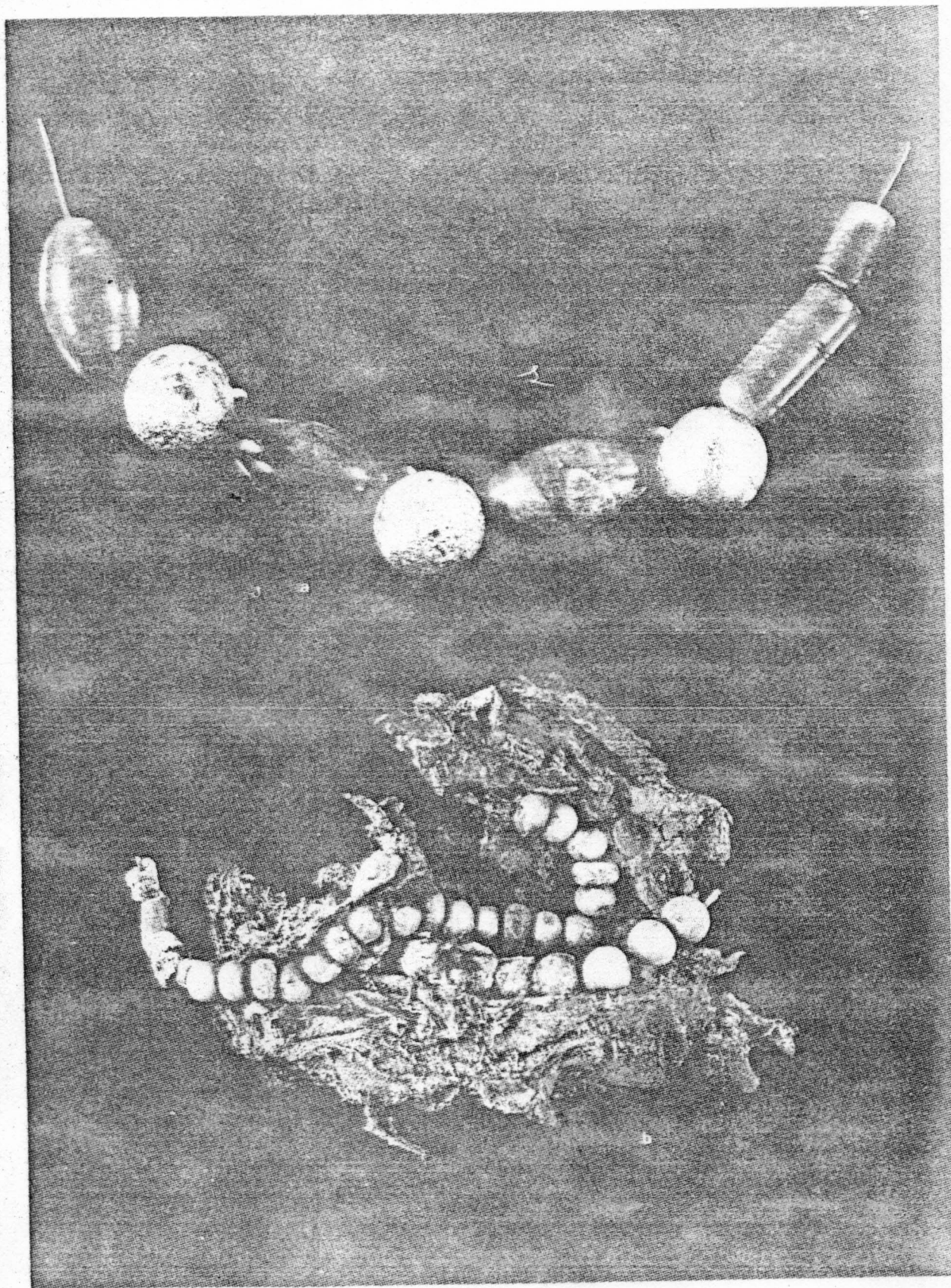


Fig. 15. Necklaces. a, necklace 2, Burial 53; b, necklace remnants, Burial 67.

It measures 90 by 6.5 mm.

Burial 55. An elliptical grave pit, 170 cm. NW/SE by 58 cm. NE/SW and 74 cm. deep, contained the vehicle of disposal of Burial 55. A juvenile, 9 to 14 years of age, had been placed in a cedar post box 160 cm. NW/SE by 47 cm. NE/SW and 12 cm. deep. The top had been constructed from two rough hewn "planks", and all the lumber used in the burial box was 3.5 cm. thick. No square cut nails were recovered.

The remains were well preserved and indicated that the individual had been laid on the back in an extended position, with the arms at the sides, the hands resting on the hips, and oriented N60°W.

The only grave goods recovered from the burial box were a 4-hole button and a very small wooden button 12 mm. in diameter and 2 mm. thick. The 4-hole button, 17 mm. in diameter and 2 mm. thick, is made of lead (Fig. 13u). The wooden button (Fig. 13v) has a raised rim and three holes, 1 mm., 2 mm., and 1 mm. in diameter, respectively, cut along the midline. The middle perforation is believed to be the index hole which was used to guide the drilling of the others.

Burial 56. The vehicle of disposal for an infant burial was a cedar post box 36 cm. E/W by 18 cm. N/S and 8 cm. deep. The poorly preserved remains had probably been placed on the back and definitely extended with the arms at the sides. The head was looking to the right; orientation was N70°W.

Three brass bracelets and 1013 trade beads (described in Table 20) were recovered from beneath the burial. One tapered cold hammered brass

TABLE 20. --Trade Beads from Burial 56

ALP. IV - ca. 1840 - ca. 1860

| Type | Shape | Diameter (mm) | Glass | Color | Total |
|---------------|----------|------------------|-------------|---------|----------|
| Tubular drawn | Circular | 2 | Opaque | N9.5/0 | 1 |
| Tubular drawn | Circular | 3 | Opaque | N9.5/0 | 2 |
| Tubular drawn | Circular | 4 | Opaque | N9.5/0 | 2 |
| Tubular drawn | Circular | 2 | Translucent | 10BG5/6 | 3 |
| Tubular drawn | Circular | 3 | Translucent | 10BG5/6 | 996 |
| Tubular drawn | Circular | 4 | Translucent | 10BG5/6 | 8 |
| Tubular drawn | Circular | 3 | Opaque | 7.5G4/4 | <u>1</u> |
| Total: | | | | | 1013 |

bracelet with overlapping pointed ends measured 40 by 20 mm. The second

of the coffin of Burial 64. Consequently, the burial box was almost completely destroyed and the remains disarticulated and scattered. Only a shallow surface depression and fragments of wood marked the location of the grave.

The infant had been interred in a cedar box approximately 46+ cm. long probably constructed of milled lumber and secured with square nails, although none were recovered from the pit fill. Mode of deposition and position of the body could not be discerned, although the individual was probably extended on the back. Relative placement of the arms and head is also unknown. The skeletal material was well preserved. Orientation of the remaining side of the coffin was S68°W.

A total of 304 trade beads, described in Table 20, and a single rolled brass tinkler were removed from the fill of the pit. All but two of the beads range from 2 to 4 cm. in diameter, the size normally utilized for sewed garment decoration. The rolled brass tinkler is conical in shape, 30.6 mm. long, 2.5 to 5 mm. wide, and 0.8 mm. thick.

TABLE 21. --Trade Beads from Burial 64

ALP. V - ca. 1862 - ca. 1880

| Type | Shape | Diameter (mm) | Glass | Color | Total |
|---------------|----------|------------------|-------------|--------|-------|
| Tubular drawn | Faceted | 7 | Translucent | 5PB3/6 | 2 |
| Tubular drawn | Circular | 2 | Opaque | N9.5/0 | 3 |
| Tubular drawn | Circular | 2.5 | Opaque | N9.5/0 | 223 |
| Tubular drawn | Circular | 3 | Opaque | N9.5/0 | 31 |
| Tubular drawn | Circular | 4 | Opaque | N9.5/0 | 19 |
| Tubular drawn | Circular | 3 | Opaque | N1/0 | 26 |
| Total: | | | | | 304 |

Burial 65. An infant, 18 to 24 months old, had been interred in a sawed plank box 65 cm. E/W by 32 cm. N/S and 10 cm. deep constructed from lumber 2 cm. thick. The coffin had been secured with square nails set within 6 cm. of each corner and spaced 12 to 20 cm. apart along the side and end boards. Eight of these specimens were recovered during excavation. The burial box rested in a pit 78 cm. E/W by 41 cm. N/S, 57 cm. below the surface.

Deposition was on the back in an extended position with the right arm along the side and the left flexed to the abdomen. The head looked slightly to the right. Orientation of the burial was S68°W. Preservation of the remains was only fair.

Eighty-five green, black, red, and amber trade beads--all 2 mm. in diameter--were recovered from the interior of the burial box. The use of these beads, described in Table 22, is unknown.

TABLE 22. --Trade Beads from Burial 65

ALP, V - ca. 1862 - ca. 1880

| Type | Shape | Diameter (mm) | Glass | Color | Total |
|---------------|----------|------------------|-------------|---------|-------|
| Tubular drawn | Circular | 2 | Opaque | 2.5Y7/8 | 64 |
| Tubular drawn | Circular | 2 | Translucent | 5R4/8 | 1 |
| Tubular drawn | Circular | 2 | Translucent | 5G3/6 | 9 |
| Tubular drawn | Circular | 2 | Opaque | N1/0 | 11 |
| Total: | | | | | 85 |

Burial 66. An elliptical grave pit 80 cm. E/W by 46 cm. N/S and 78 cm. deep had been dug to enclose the vehicle of disposal of an infant. The remains of a box, 56 cm. E/W by 22 cm. N/S, consisting only of a cedar plank underneath the burial were so poorly preserved that the determination of the type of coffin was impossible.

The infant had been laid on the board in an extended position on the back oriented N64°W. The arms had been placed at the sides.

No grave goods accompanied the burial.

Burial 67. The body of a juvenile, 2 to 4 years of age, had been interred in a sawed plank box 106 cm. E/W by 38 cm. N/S and 9 cm. deep and placed in a grave pit 78 cm. below the surface. The burial box had been secured with square nails, of which six entire specimens and five fragments were recovered during excavation.

The child had been laid on the back in an extended position, oriented S26°E. The left arm had been flexed to the throat and the right lay at the side. Orientation of the burial was S75°W.

Sixty-five trade beads, described in Table 23, and six sections of wound brass wire tubing, 5 mm. in diameter, comprised a three strand necklace of which only a small segment of the pattern remained intact (Fig. 15b).

Strand 1 was formed by stringing together two circular redwood (10R6/10) tubular drawn beads, and one multilayered dark rose brown (5R3/8) bead with an opaque white interior (Cornaline d'Allepo), and

TABLE 23. --Trade Beads from Burial 67

ALP. V - ca. 1862 - ca. 1880

| Type | Shape | Diameter (mm) | Glass | Color | Total |
|--------------------------------|----------|------------------|-------------|---|-------|
| Tubular drawn | Tubular | 5 | Translucent | 5R4/8 | 2 |
| Tubular drawn | Faceted | 5 | Translucent | 5G3/4 | 1 |
| Tubular drawn | Faceted | 4 | Opaque | N1/0 | 1 |
| Tubular drawn | Faceted | 5 | Translucent | 7.5PB2/8 | 4 |
| Tubular drawn | Faceted | 5 | Translucent | 5PB3/6 | 1 |
| Tubular drawn | Faceted | 7 | Opaque | 5PB3/6 | 1 |
| Tubular drawn | Faceted | 4.5 | Translucent | N1/0 | 1 |
| Tubular drawn | Faceted | 5 | Translucent | 5G3/4 | 1 |
| Tubular drawn | Circular | 2 | Opaque | N9.5/0 | 4 |
| Tubular drawn | Circular | 2.5 | Opaque | N1/0 | 1 |
| Tubular drawn | Circular | 2.5 | Translucent | 5PB3/6 | 1 |
| Tubular drawn | Circular | 3 | Translucent | 5B4/6 | 1 |
| Tubular drawn | Circular | 7 | Opaque | 10R6/10 | 20 |
| Tubular drawn | Circular | 7 | Translucent | 5PB3/6 | 2 |
| Tubular drawn | Circular | 7 | Translucent | 2.5B6/4 | 3 |
| Tubular drawn | Circular | 8 | Translucent | 5YR4/6 | 1 |
| Tubular drawn | Oval | 8.5 | Translucent | 10R6/10 | 1 |
| Tubular drawn | Faceted | 9 | Opaque | 2.5PB3/6 | 1 |
| Tubular drawn, multilayered | Circular | 8 | Translucent | 5R3/8 / N8/0 | 9 |
| Wire wound | Tubular | 6 | Translucent | 5G4/8 | 1 |
| Wire wound | Tubular | 6 | Opaque | 5G6/6 base, with stripe of 2.5R6/8 framed by 2 stripes of N9.5/0 around circumference. Additional drop of base color on opposite sides of diameter. | |
| Wire wound | Oval | 6 | Opaque | N1/0 with 2 stripes N9.5/0 | |
| Wire wound | Oval | 7 | Opaque | 10BG5/6 with 2 stripes of 5R4/8 bounded by N9.5/0 | |
| Wire wound | Oval | 5 | Opaque | 10BG5/6 with 2 stripes N9.5/0 | |
| Brass | Round | 8 | | Same size hole | 6 |
| Brass | Round | 8 | | Different size hole | 4 |
| Total: | | | | | 65 |

TABLE 24. --Trade Beads from Burial 74A

ALP. V - ca. 1862 - ca. 1880

| Type | Shape | Diameter (mm) | Glass | Color | Total |
|---------------|----------|------------------|-------------|----------|-------|
| Tubular drawn | Faceted | 2.5 | Translucent | 5R3/8 | 1 |
| Tubular drawn | Faceted | 5 | Translucent | 5PB2/6 | 5 |
| Tubular drawn | Circular | 2.5 | Opaque | N1/0 | 9 |
| Tubular drawn | Circular | 3 | Opaque | N1.0 | 89 |
| Tubular drawn | Circular | 2 | Opaque | N9.5/0 | 25 |
| Tubular drawn | Circular | 2.5 | Opaque | N9.5/0 | 54 |
| Tubular drawn | Circular | 3 | Opaque | N9.5/0 | 124 |
| Tubular drawn | Circular | 4 | Opaque | N9.5/0 | 18 |
| Tubular drawn | Circular | 6.5 | Opaque | 5G6/4 | 17 |
| Tubular drawn | Circular | 7 | Translucent | 7.5BG3/4 | 1 |
| Tubular drawn | Circular | 8 | Translucent | 5G3/4 | 1 |
| Tubular drawn | Oval | 8 | Translucent | 5R3/8 | 1 |
| Tubular drawn | Circular | 8 | Translucent | 5PB2/6 | 1 |
| Wire wound | Circular | 7 | Translucent | 7.5BG3/4 | 1 |
| Total: | | | | | 347 |

The body of the child had been placed in the south side of the burial box with the left shoulder resting on the right elbow of the subadult. Deposition was on the back in an extended position oriented N74°W. The arms had been laid at the sides, the hands placed on the hips, and the head tilted slightly to the right facing up and looking down the valley.

Thirty-three opaque torus, white (N9.5/0) tubular drawn trade beads, 2 to 2.5 mm. in diameter, were recovered from the right wrist and may have been strung as a bracelet. In addition, a drilled horse incisor, 67 mm. long, 5 mm. to 19.5 mm. wide and 10 mm. to 9.6 mm. thick was recovered from the floor of the burial box to the west of the skull.

Burial 75. A male subadult, 12 to 15 years of age, had been buried in an extended position on the back in a simple pit 157 cm. E/W by 66 cm. N/S, 81 cm. below the surface. The arms had been placed at the sides and the head tilted slightly to the left looking forward. Orientation of the burial was N89°W.

A single non-utilized flake of pink cryptocrystalline with a deposit of carbonate patina, probably originally from a Cascade-Windust component, was buried with the individual.

TABLE 25. --Trade Beads from Burial 84

ALP. IV - ca. 1840 - 1862

| Type | Shape | Diameter (mm) | Glass | Color | Total |
|---|----------|------------------|-------------|------------------|-------|
| Tubular drawn | Faceted | 5 | Translucent | 5PB3/8 | 1 |
| Tubular drawn | Faceted | 7.5 | Translucent | 5PB3/8 | 7 |
| Tubular drawn | Faceted | 7 | Translucent | 5 R2/6 | 1 |
| Tubular drawn | Faceted | 7.5 | Opaque | N9.5/0 | 1 |
| Tubular drawn | Circular | 7 | Translucent | 5B3/4 | 29 |
| Tubular drawn | Circular | 7.5 | Opaque | N9.5/0 | 1 |
| Tubular drawn, multilayered | Circular | 11 | Opaque | 5R4/10 / N8/0 | 1 |
| Wire wound | Tubular | 10 | Translucent | 10BG5/6 | 2 |
| Wire wound | Oval | 7 | Translucent | 5B3/4 | 1 |
| Wire wound | Oval | 7 | Opaque | N9.5/0 | 3 |
| Wire wound | Tubular | 6 | Opaque | 10GY4/4 | 1 |
| base, with 3 panels of candy cane stripe lines enclosing a series of 3 vertical black dots, with white rim | | | | | |
| Tubular drawn | Circular | 2.5 | Opaque | N9.5/0 | 1 |
| Tubular drawn | Circular | 3 | Opaque | N9.5/0 | 140 |
| Tubular drawn | Circular | 3 | Translucent | 5R2/6 | 16 |
| Tubular drawn | Circular | 3 | Translucent | 5G3/4 | 4 |
| Tubular drawn | Circular | 3 | Translucent | 2.5B4/6 | 25 |
| Tubular drawn | Circular | 3 | Translucent | 5B4/6 | 17 |
| Tubular drawn | Circular | 3 | Opaque | 5G6/4 | 28 |
| Tubular drawn, multilayered | Circular | 3 | Opaque | 5R4/10 / N8/0 | 10 |
| Total: | | | | | 290 |

Recovered from the area between the femora, immediately below the pelvis, were a broken bone comb and a pendant fashioned from a stamped circular copper gunpowder label (Fig. 17). The remainder of the comb 33.8 mm. long, 38 mm. wide, and 1.5 mm. high slightly convex on the upper edge, had teeth 10.3 mm. long set 0.5 mm. apart. Approximately one-third of the teeth had been broken off on the right side, and all from the bottom left. The comb is of Euroamerican manufacture, probably machine made.

Burial 86. Amateur excavation of an area 170 cm. E/W by 60 cm. N/S largely destroyed the vehicle of disposal of an adult male and disarticulated all skeletal material except the ankles. Only a shallow surface depression and scattered wood fragments indicated this recent activity.

Cedar fragments recovered from the fill and the remaining east portion of the burial box suggest it was constructed from unmilled planks and originally measured 160+ cm. E/W by 59 cm. N/S and 20 cm. deep. No nails were recovered from the fill of the pit. Orientation taken from the side wall of the box was N64°E.

Although the mode of deposition is unknown, placement on the back in an extended position is probable.

Grave goods which accompanied the individual included dentalia, 51 trade beads described in Table 26, and a cache in the northeastern corner of the burial box. A sucking tube, two rings, one wound brass wire tube, and four hawk or eagle claws were recovered from the cache (Fig. 19).

Dentalia, including 18 complete specimens and 18 fragments, were recovered from the region of the ankles, and may have been utilized for garment decoration or strung as ankle bracelet[s]. The size range of the trade beads suggests the possibility of garment decoration, necklaces, and/or bracelets.

TABLE 26. --Trade Beads from Burial 86

ALP. IV - ca. 1840 - ca. 1862

| Type | Shape | Diameter (mm) | Glass | Color | Total |
|---------------|----------|------------------|-------------|---------|-------|
| Tubular drawn | Faceted | 5 | Translucent | 5PB5/8 | 1 |
| Tubular drawn | Circular | 2 | Opaque | N9/0 | 4 |
| Tubular drawn | Circular | 2.5 | Opaque | N9.5/0 | 1 |
| Tubular drawn | Circular | 2.5 | Opaque | 2.5B4/6 | 1 |
| Tubular drawn | Oval | 5 | Opaque | N9.5/0 | 1 |
| Tubular drawn | Circular | 5 | Opaque | 10YR8/4 | 1 |
| Tubular drawn | Circular | 7 | Translucent | 5B3/6 | 25 |
| Wire wound | Circular | 7 | Translucent | 5G3/4 | 17 |
| Total: | | | | | 51 |

The proximal and distal articular surfaces of the femur or tibia of an immature artiodactyl, had been cut away to form a bone

been dug to accommodate the burial box.

The individual had been placed on the back, oriented N48°W or uphill, the legs extended to the southwest and the arms laid along the sides. The head looked up. The remains were poorly preserved and semi-articulated--the right humerus was missing and the right femur lay atop the right innominate. The child may have been dressed in a leather garment for burial.

Although no grave goods had been placed in the coffin, a cache of artifacts was buried outside the box including 39 trade beads described in Table 27, 1 elliptical iron bracelet, 1 white glass button, 4 transfer ware buttons, 8 crotal bells, and a book.

TABLE 27. --Trade Beads from Burial 89

ALP. V - ca. 1862 - ca. 1880

| Type | Shape | Diameter (mm) | Glass | Color | Total |
|--------------------------------|----------|------------------|-------------|-----------------------------|-------|
| Tubular drawn | Faceted | 6 | Translucent | 5B5/6 | 1 |
| Tubular drawn | Circular | 6 | Opaque | N1/0 | 21 |
| Tubular drawn | Circular | 6.5 | Opaque | 5G6/4 | 2 |
| Tubular drawn | Circular | 8 | Opaque | N9/0 | 4 |
| Tubular drawn | Circular | 9 | Opaque | 5PB3/6 | 2 |
| Tubular drawn, multilayered | Circular | 6 | Opaque | 5R4/10 / 10Y7/7 | 1 |
| Wire wound | Oval | 7 | Opaque | N9.5/0 with cane 2.5R6/8 | 8 |
| Total: | | | | | 39 |

Four disarticulated strands of trade beads cemented by corrosion to the surface of an elliptical iron bracelet 45 mm. by 32.1 mm. and 10 mm. thick indicate the following stringing patterns: (1) four black (N1/0) beads had been strung together, (2) four black (N1/0) beads and one white bead (N9.5/0) with fine cane in light cherry rose (2.5R6/8), (3) one dark blue (5PB3/6) bead lay adjacent to the redwood (5R4/10) bead with an opaque gold (10Y7/7) interior, (4) two wire wound beads (N9.5/0) with light cherry rose cane (2.5R6/8) were attached. The intermixture of colors and sizes suggests that all originally formed a single strand; the association with the iron bracelet further suggests that this too may have been used in the same manner.

Eight crotal or Morris bells (Fig. 13ff,gg), Type IA1, (Weatherford 1971:12) strung on a piece of twisted wool 15 mm. long were