

ABSTRACT

Author: John F. Furey, Jr.

Title: The Spanish River Complex: Archaeological Settlement Patterning in the Eastern Okeechobee Sub-area, Florida

Institution: Florida Atlantic University , Boca Raton, Fla.

Degree: Master of Arts

Year: 1972

Through controlled stratigraphic excavations, surface collections and published reports, a coastal Belle Glade settlement pattern and cultural complex is reconstructed. This site was continually occupied for a period of about 1,000 years. A population increase and an increase in socio-political complexity coincides with a change in the subsistence base at this complex during the Glades I period. This same economic change is noted in many middens along the Florida east coast and is believed to have been caused by the introduction of agriculture. This was accompanied by a religious movement in which mound construction and burial within these mounds were practiced. The diffusion of this economic-ceremonial complex was from the Lake Okeechobee area where it developed during the Hopewell period.

the presence of small red land crabs, Gecarcinus lateralis.

Spanish olive jars are common in late sites in the Glades, and a total of seven of these sherds was analyzed. Two thick body sherds (plate 21, A) exhibit throwing marks from manufacture. The sherds are a terra cotta red color and range from 0.7 to 1.7 cm. in thickness.

One piece of historic porcelain china was examined. This rim sherd, probably from a plate (plate 21,D) has a floral design in green with gold, yellow and black stripes decorating the interior rim and lip. It exhibits a very fine crackle.

A European pipe with a section of the bowl and stem broken was recovered (plate 22). The pipe measures 6.8 cm. long and the stem exterior measures 0.7 cm. near the bowl. The bowl measures 1.6 cm. wide and 2.1 cm. long at the top. The interior stem diameter measures 3.5 millimeters. This pipe compares with others from the 1780's in form and may date from this period.

A single green, faceted glass bead came from near burial number one at 995L205. This bead does not resemble any of the beads analyzed by Webb and Gregory (1965) and cannot be placed temporally (plate 21, E).

Other historic artifacts include: a partially broken bottle (A-1988), two pieces of white glass (A-1926 and A-1934), six pieces of amber glass (A1921 (3), A-1908 (1) and unknown (2)). One square cut nail (A-1995), an historic screw, a 20-gauge Western Super X shotgun cartridge (A-1998), ten pieces of very rusty bolts or ships' nails, and seventy eight pieces of rusted metal were among the his-

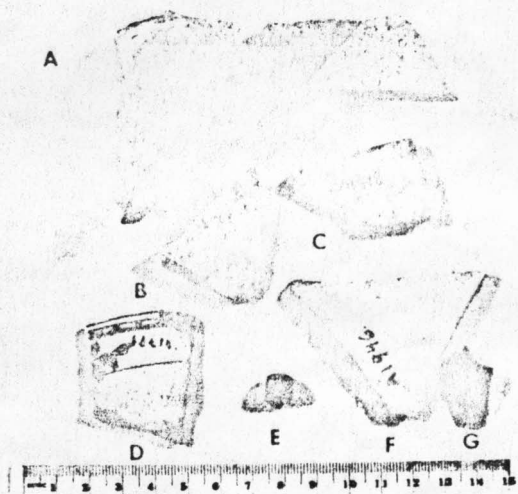


Plate 21

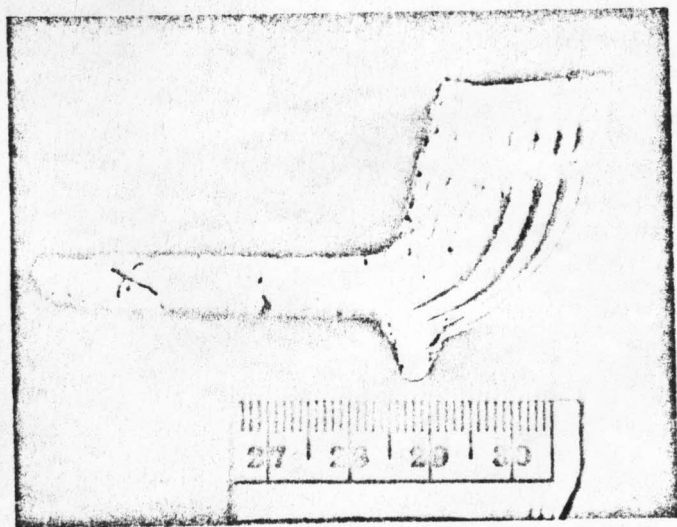


Plate 22