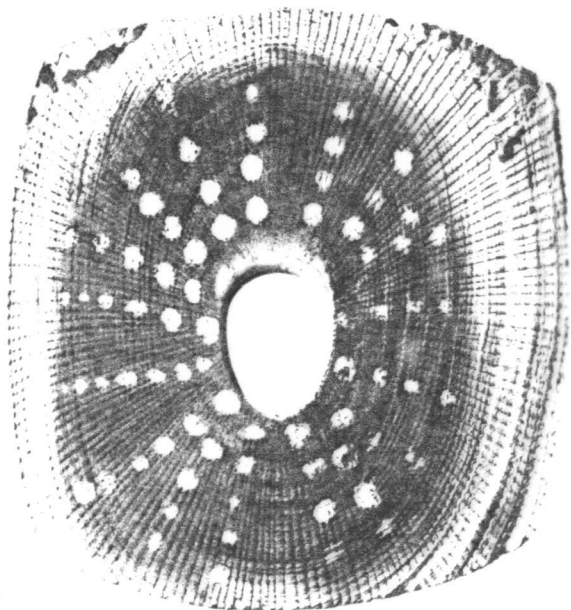


666.



PAINTED KEYHOLE LIMPET SHELL
(Height 2 1/4 in.)

INDIAN NOTES AND MONOGRAPHS

EDITED BY F. W. HODGE



VOL. VII

No. 4

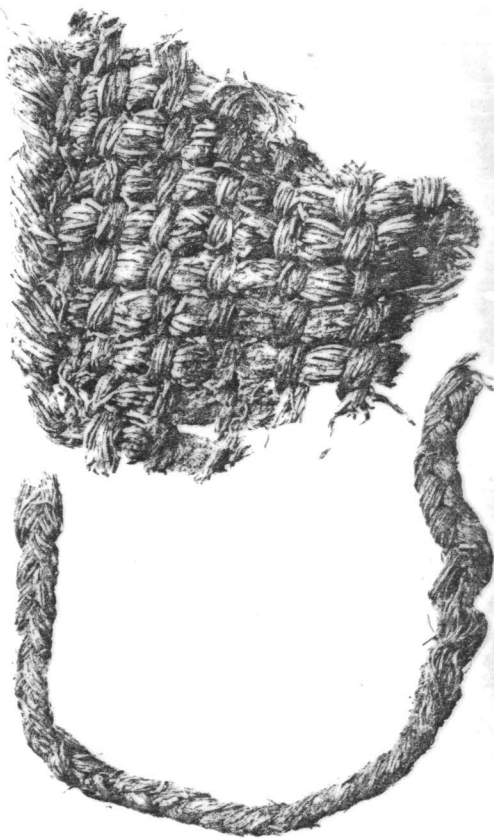
A SERIES OF PUBLICA-
TIONS RELATING TO THE
AMERICAN ABORIGINES

CERTAIN ARTIFACTS FROM SAN MIGUEL ISLAND, CALIFORNIA

BY
GEORGE G. HEYE

NEW YORK
MUSEUM OF THE AMERICAN INDIAN
HEYE FOUNDATION

1921



FRAGMENT OF GRASS APRON AND OF A BRAIDED
TIE-STRING

(The left edge of the apron fragment is 4 in.)

FABRICS

159

On certain skeletons also were aprons of woven grass, fragments of which were preserved. Pl. CXXIII shows the end of one of these with a braided warp and twisted tie-string. They are all of the same weave (pl. CXXIV), but, as shown in the illustration, sometimes the tie-string is braided instead of twisted.

INTRUSIVE OBJECTS

The only objects not of native origin found by the expedition were some glass beads, with one exception found on the camp-sites. From a single grave were taken fifty-one small glass beads—light-blue, dark-blue, yellow, white, and red—and also a larger dark-blue one of barrel shape. No trace of iron, not even a rust stain, was observed.

SUMMARY

The results of the Mrs Thea Heye Expedition, conducted as it was after San Miguel island had been more or less archeologically explored and so many aboriginal objects

AND MONOGRAPHS

4