

## THREE SALVAGED TEQUESTA SITES IN DADE COUNTY, FLORIDA

D. D. Laxson

Between the later part of 1958 and February, 1959, the following three middens, located in Dade County, Florida, were destroyed during various construction projects. Fortunately, material representative of the Tequesta culture was salvaged from each before destruction was complete.

### FLORIDA PORTLAND SITE

This site (Fig. 1, top) is located in a rectangular hammock 3.6 miles south of the Tamiami Trail on Khrome Ave. and 1.2 miles west of the entrance to the Florida Portland Cement Plant.

The midden was destroyed during the construction of a concrete dynamite bunker and the E-W bisecting of the hammock by a railroad spur. Five test pits were excavated north of the bunker among guava, paw-paw and bamboo trees. The area was further cleared and the spoil pushed north into the swampy area in the fall of 1958 and excavations ceased.

The site is known locally as, "The Bamboo Mound."

### LITTLE RIVER SITE

The Little River midden (Fig. 1, center) is situated between the west bank of the river and the east side of the F. E. C. right of way directly opposite NE 82nd Terrace, which dead-ends at the tracks, in the village of El Portal.

During the building of a dam, part of a Flood Control Project, by the U. S. E. D. the midden was bulldozed. After searching the site for an area where levels could be depended upon, three pits were excavated adjacent to the F. E. C. right of way in a narrow strip of black dirt 200 feet long, and 30 feet wide. The area was 7.6 feet above MSL. Excavations were completed December 23, 1958.

### BRICKELL POINT SITE

This midden (Fig. 1, bottom) is on a high rock out-cropping along the south bank of the Miami River. It is adjacent to the Brickell Point Apartments on the north and the residence 501-B

Brickell Ave. on the south.

Soil is shallow on top becoming several feet deep sloping eastward to the channel in Biscayne Bay that runs N-S between the site and Burlingame Island.

Surface collecting was accomplished and tests confined to the SE quadrant of the midden, this being the only undisturbed area during the clearing of the land preparatory to the erecting of a building for Lodge No. 948, B. P. O. E. A single test trench was excavated. The first foot showed signs of old fill, black dirt and shell extended to a depth of 30 inches to the limestone base.

By February, 1959 construction had reached the point where further excavations were useless and the site was closed out.

The midden was evidently part of the well known Miami Midden No. 1 (Goggin, 1949. p. 92) located on the opposite bank of the river where the Dupont Plaza Building now stands.

Shell tools and potsherds were found 300 feet west on SE 5th Street along the rivers edge in a wooded area, owned by Mr. J. C. Ray, between the YMCA Playground and a parking lot.

#### SUMMARY

Ceramic stratigraphy, for the most part, in the Florida Portland site ran true to form with Glades III types superimposed on Glades II types as shown in the Pottery Distribution Chart. Unique sherds included a variation of Surfside Incised (Fig. 2,4) and several new incised designs (Fig. 2, 6, 7). The zig-zag motif, found pendant to the rim in some Dade County sites, was confined to the top of the rim on two sherds in the 0-6 inch level. A single sherd of the "double" Key Largo was in the 6-12 inch level (Fig. 2, 3).

Despite the sites distance from the coast, a considerable number of shells and shell artifacts were found (See Artifact Distribution Chart). A small one and one-half inch long Busycon pick, possibly a toy, was found on the surface. Manufacture was identical with the larger type.

Shark vertebrae were rare compared to the other two sites. This may mean the sharks were not, or could not be easily hauled

the eleven miles from the coast to the habitation site.

A carving (Fig. 2, 5), that might be classified as an art object, was found in conjunction with Glades Plain and Belle Glade pottery. While the exact level could not be ascertained, a dating of early Glades III is likely.

The object, a small bird (Florida State Museum, Cat. No. 94380) was made from antler and originally carved seated on a perch of some kind. The carving and scraping was well done and the surface highly polished. The eyes were drilled to a depth of .1 of an inch and slightly countersunk. Possibly a piece of pearl or shell was fastened in the socket.

Seminole faceted and spherical beads along with iron pot fragments were found on the surface.

At the Little River site, Pit 1 was located 100 feet west of the river and 20 feet east of the RR tracks directly opposite the dam. Pits 2 and 3 were located in line with and south of Pit No. 1.

Sherds were mostly those of the Glades III period but some Glades II sherds came from greater depths (See Pottery Distribution Chart). Two sherds bearing a resemblance to Englewood Incised (Fig. 2, 1, 2) were found at the 0-6 and 6-12 inch level.

It was noticed sherds of the Glades II period could be excavated from the river bank; however exact levels could not be determined and no test pit was dug. It is possible the habitation area was moved westward during Glades III times away from the river, which is tidal.

Bulldozers had crushed hundreds of immature Stomus shells on the surface. These shells had evidently been brought to the site since it is doubtful they were in the river considering its fresh water drainage from the northwest.

Shark vertebrae, some perforated, were fairly common.

Digging was confined in the Brickell Point site to strata exposed by a foundation pit in the SE quadrant of the area. Sherds were mostly Glades Plain with Dade and Miami Incised at the lower level as indicated in the Pottery Distribution Chart.

Appreciation is expressed to the following; Mr. N. J. Winkelman, Mr. J. A. Albertson and Mr. Marvin Brooks for calling attention to the sites; Mr. John Hackett, Mr. Noel Herrmann and Mr. Bob Masters for help in excavating; Mr. O. A. Stephens, Plant Superintendent of Florida Portland, Mr. Charley Miller of the Clewiston office of the U. S. Engineers and Mr. D. B. Hilton, Secretary, Miami Lodge No. 948 of the B. P. O. E., for permission to dig.

Gratitude is also expressed for the help of Mr. Ripley P. Bullen, Curator of Social Sciences of the Florida State Museum for help with typology and photography; Mr. J. C. Ray, owner of the SE 5th Street property adjoining Brickell Pt. for permission to make a surface collection and to Mr. Wayne Allen and Mr. Donald Burger for help with the foundation pit at Brickell Pt.

#### BIBLIOGRAPHY

Goggin, John M., and Frank Sommer, III.

1949. "Excavations on Upper Matecumbe Key, Florida." Yale University Publications in Anthropology, No. 41, New Haven, Conn.

Goggin, John M.

1950. "Florida Archaeology 1950." The Florida Anthropologist, Vol. III, Nos. 1-2, pp. 9-20. Gainesville, Fla.

Willey, Gordon R.

1949. "Excavations in Southeast Florida." Yale University Publications in Anthropology, No. 42, New Haven, Conn.

POTTERY DISTRIBUTION

Pottery type	Fla. Portland			Little River			Brickell Pt.		
	0-6"	6-12"	12-18"	0-6"	6-12"	12-18"	0-6"	6-12"	12-18"
Body sherds	1091	859	908	113	124	120	101	95	49
Plain rims	214	171	172	17	13	18	9	7	2
Glades Tooled	34	5		9	10				
St. Johns Check Stamped				13	15		1		
Surfside Incised	5	2			1				
Key Largo Incised	3	14			2	2			
Matecumbe Incised		1							
Miami Incised		9	2		2	1		2	2
Dade Incised		2	2						
Upa Locka Incised	1	2	4		1	1		1	1
Ft. Drum Incised		2	5						
Noded,	1	1							
Glades Tooled-Surfside Var.	1								
Unique Incised (A)		1							
Unique Incised (B)		1							
Unique Incised (C)		1							
Finger-nail Incised	2								
Ticked rim		1							
Zig-zag motif, top of rim.	2								
Englewood "like" Incised.		1		1	1				
Key Largo Var.		1			1			1	
Plain "chalky" ware							5	1	

## ARTIFACT DISTRIBUTION

Artifact	Fla. Portland			Little River			Brickell Pt.		
	0-6"	6-12"	12-18"	0-6"	6-12"	12-18"	0-6"	6-12"	12-18"
<u>Strombus</u> celts	5	4	6	6	4		3	1	1
<u>Busycon</u> picks	2	2	2					1	
Petaloid <u>Strombus</u> celts		1							
Bone points	1	1		1					
" Toy " shell pick	1								
<u>Columnella</u> awl		1	1	1		2	1	3	1
<u>Busycon</u> receptacle		5	1		1				
Shark vertebrae		1	1	22	8	5	15	9	4
<u>Macrocallista</u> scraper	1	1							
<u>Columnella</u> chisel			1						
Perforated shark tooth		1							
Bird of carved antler		1							
Seminole beads	30								
Bald eagle talon					1				
Pumice abrader								1	

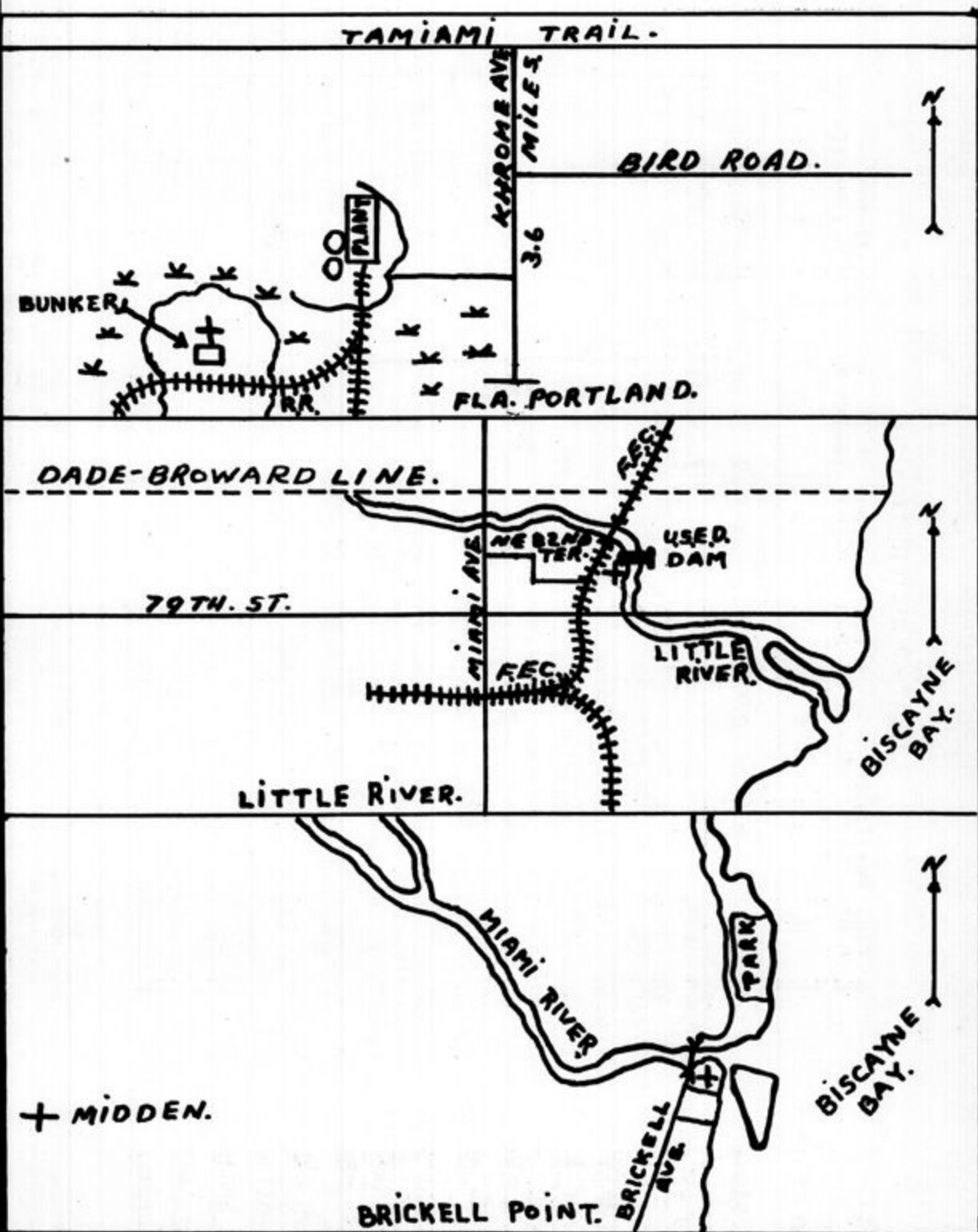


FIG. 1.  
LOCATION OF SITES.



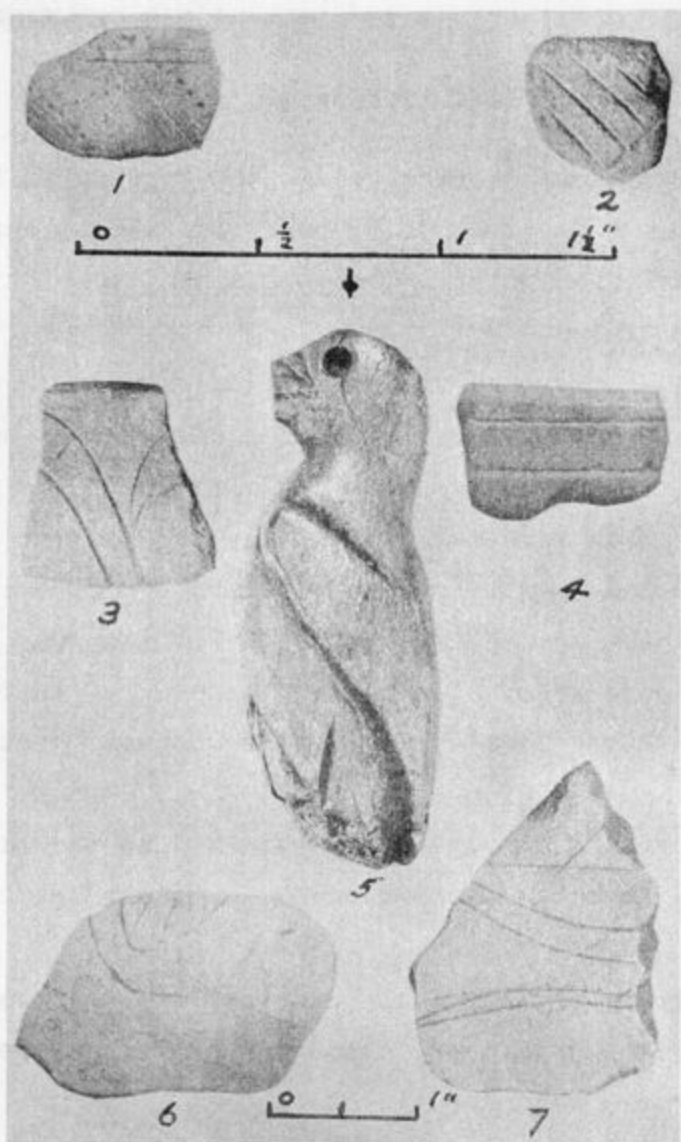


Fig. 2. Sherds and bird effigy of antler; 1-2, Little River Site; 3-7 Florida Portland Site.