

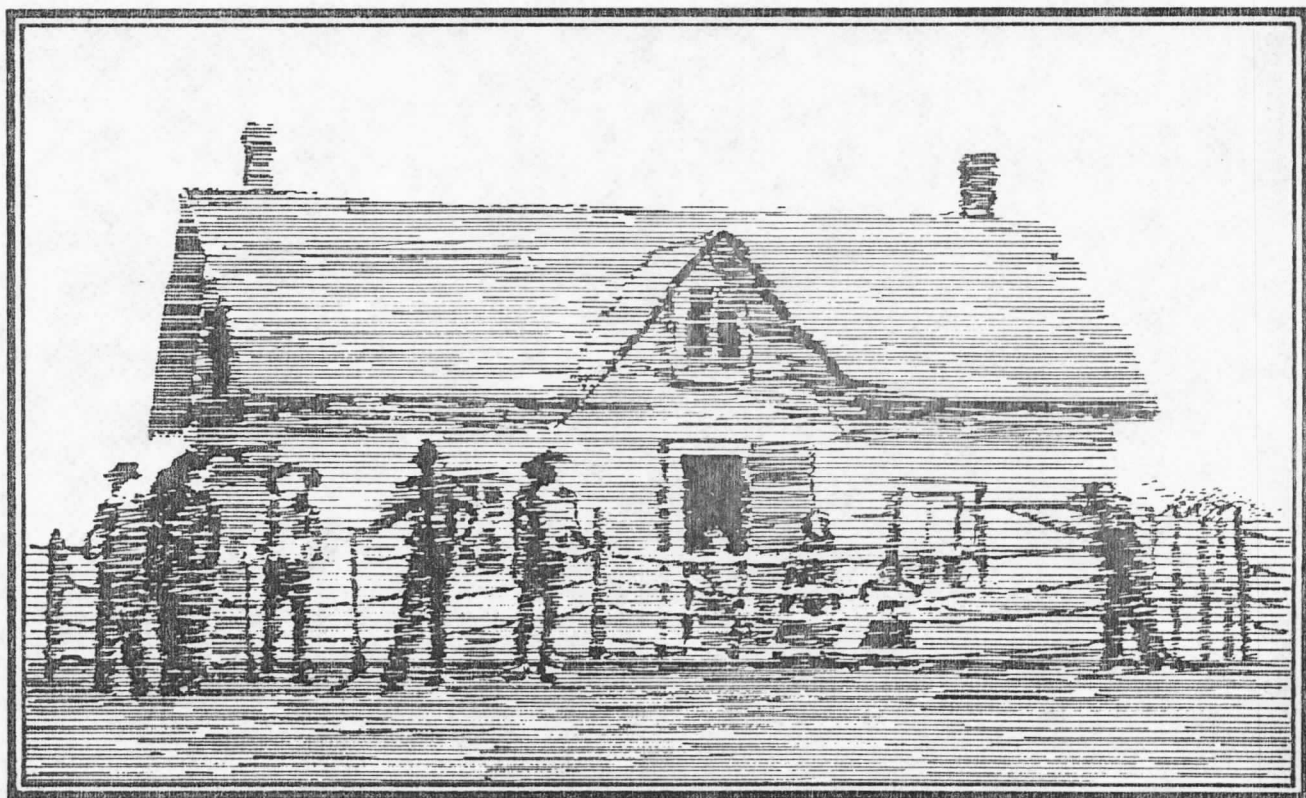
HISTORIC SITES  
SERVICE

# ARCHAEOLOGICAL INVESTIGATIONS: FORT VICTORIA, 1974

Occasional Paper  
No. 2

Timothy C. Losey, et al.

1977



**Alberta**

CULTURE  
Historical Resources

Fig. 58. Beads

Type If3	(R2M7A6-40)	1
	(R2M6S4-40)	2
Type If	(R2M6K4-19)	3
Type Ic13	(R2M6H1-29)	4
Type IIa3	(R2M6S4-39)	5
Type IIa16	(R2M6B4-21)	6
Type IIa40	(R2M6T9-20)	7
Type IVa6	(R2M6M1-45)	8
Type WIb11	(R2M6N6-12)	9
Type WIIIIa1	(R2M6M3-12)	10



1



2



3



4



5



6



7



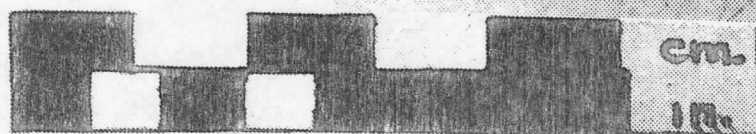
8



9



10



## APPENDIX VI:

### BEADS

During the 1974 field season, 62 glass beads were recovered (Table 1, Figure 58). These have been classified, as nearly as possible, in the system developed by Kidd and Kidd (1970). Some difficulty arose with exact matching of the beads and the classification system. The six beads listed in Table 1 as Ic13 are drawn-out at the ends, and are thus more oval in shape than Kidds' (1970:55). The beads listed as If are somewhat rounder than illustrated, and the facets are irregular and do not perfectly match those in Kidds' (1970:55) system. The bead listed as Iib68 is more doughnut-shaped and has wider white stripes than shown in Kidds' (1970:57) illustration. Lastly, three of the beads listed as wire wound (WIb11, WIIfa1) have a central ridge circling the band and may be mold-made rather than wire wound.

Of the 62 glass beads recovered, 22.5% (14) are Class I, 54.8% (34) are Class II, 16.1% (10) are Class IV, and 6.5% (4) are wire wound beads. No Class III beads were noted in the 1974 sample. In size, 12.9% (8) are very small (under 2mm), 41.9% (26) are small (2-4mm), 37.1% (23) are medium (4-6mm), and 8.1% (5) are large (6-10mm). No very large (>10mm) beads were noted.

The bead colours show some variation, but in general are white, green, red or blue. Only 9.7% (6) are white, 11.3% (7) are green, 35.5% (22) are red and 43.5% (27) are blue. It should be noted, however, that within each colour group there is much variation in tone.

In shape, only 3.2% (2) of the beads are oval. Round and faceted forms are equally represented at 22.6% (14) in each case. Over half of the sample is circular in shape; specifically 51.6% (32). Regardless of shape, 11.3% (7) of the beads are made of clear glass, 24.2% (15) are translucent and 64.5% (40) are opaque.



Table 1.

Bead Chart

Type Kidd 1970)	Size	Shape	Class	Quantity	Colour	Catalogue Number (R2M--)	Location/ Level
<u>Class I</u>							
(Ic13)	M	FA	Tr	6	Blue	6H1-29	Press Rm.; Upper
If3	L	FA	C1	1	Lt. Green	6S4-40	Store; Lower
	L	FA	C1	1	Lt. Green	7A6-40	Dairy; Lower
(If)	M	R/FA	Op	1	Ultra- marine	6S2-21	Store; Lower
	M	FA	C1	5	Ultra- marine	6K4-19	Dairy; Lower
<u>Class II</u>							
IIa2	S	C	Op	1	Redwood	6A8-12	Dairy; Upper
	S	C	Op	4	Redwood	6S4-42	Store; Lower
	VS	C	Op	1	Redwood	6S4-47	Store; Lower
	S	C	Op	2	Redwood	6S2-20	Store; Upper
	S	C	Op	2	Redwood	6T6-19	Press Rm.; Upper
IIa3	S	O	Op	1	Redwood	6S4-39	Store; Lower
IIa12	M	C	Tr	1	(Violet- tinged white)	6S1-16	Store; Upper
	S	C	Tr	1		6S4-43	Store; Lower
	VS	C	Op	1	White	6S4-46	Store; Lower
	VS	C	Op	1	White	6M3-14	Press Rm.; Lower
	S	C	Op	1	White	6N8-18	Cellar; Slump

Table 1 (Cont'd.). Bead Chart

Type (Kidd 1970)	Size	Shape	Class	Quantity	Colour	Catalogue Number (R2M--)	Location/ Level
IIa16	L	R	Op	1	White	6B4-21	Shed; Upper
IIa23	VS	R	Op	1	Green	6A14-10	Store; Lower
IIa27	S	C	Op	1	Green	6S4-45	Store; Lower
	S	C	Op	1	Green	7A1-21	Dairy; Lower
IIa28	S	R	Tr	1	Green	6S2-18	Store; Lower
	S	R	Op	1	Green	6M3-13	Press Rm.; Lower
IIa36	M	R	Op	1	Blue	6H2-32	Press Rm.; Upper
	VS	R	Op	1	Blue	6E2-63	Shed; Lower
IIa37	VS	C	Op	1	Blue	6S3-33.1	Store; Upper
	S	C	Op	1	Blue	6N2-61	Cellar; Trash
IIa40	L	R	Tr	2	Blue	6T9-20	Cellar; Fill
IIa41	S	C	Op	1	Blue	6S3-33.2	Store; Upper
	VS	C	Op	1	Blue	6S2-17	Store; Lower
	VS	C	Op	1	Blue	7B2-9	Dairy; Lower
	M	C	Op	1	Blue	6A8-12	Dairy; Upper
IIa47	M	C	Tr	1	Blue	6S5-36	Store; Lower
IIb58	S	R	Op	1	Blue	6S4-44	Store; Lower

Table 1 (Cont'd.). Bead Chart

Type (Kidd 1970)	Size	Shape	Class	Quantity	Colour	Catalogue Number (R2M--)	Location/ Level
<u>Class IV</u>							
(All Class IV beads have a clear, apple green core)							
IVa6	S	C	Op	1	Redwood	6S2-20	Store; Lower
	M	C	Op	1	Redwood	6S4-41	Store; Lower
	M	C	Op	1	Redwood	6M1-45	Press Rm.; Upper
	S	C	Op	1	Redwood	6M2-40	Press Rm.; Lower
	M	C	Op	2	Redwood	6N8-17	Cellar; Slump
	S	C	Op	2	Redwood	6T9-18	Cellar; Fill
IVa7	S	O	Op	1	Redwood	6S3-33.3	Store; Upper
IVa9	S	R	Op	1	Redwood	6S4-42	Store; Lower
<u>Wire Wound</u>							
Wib8	M	R	Tr	1	Reddish	6H1-30	Press Rm.; Upper
Wib11	M	R	Op	1	Blue	6N6-12	Cellar; Slump
WIIIa1	S	R	Tr	1	(Blue with gilded coating)	6N6-13	Cellar; Slump
	M	R	Tr	1		6M3-12	Press Rm.; Lower