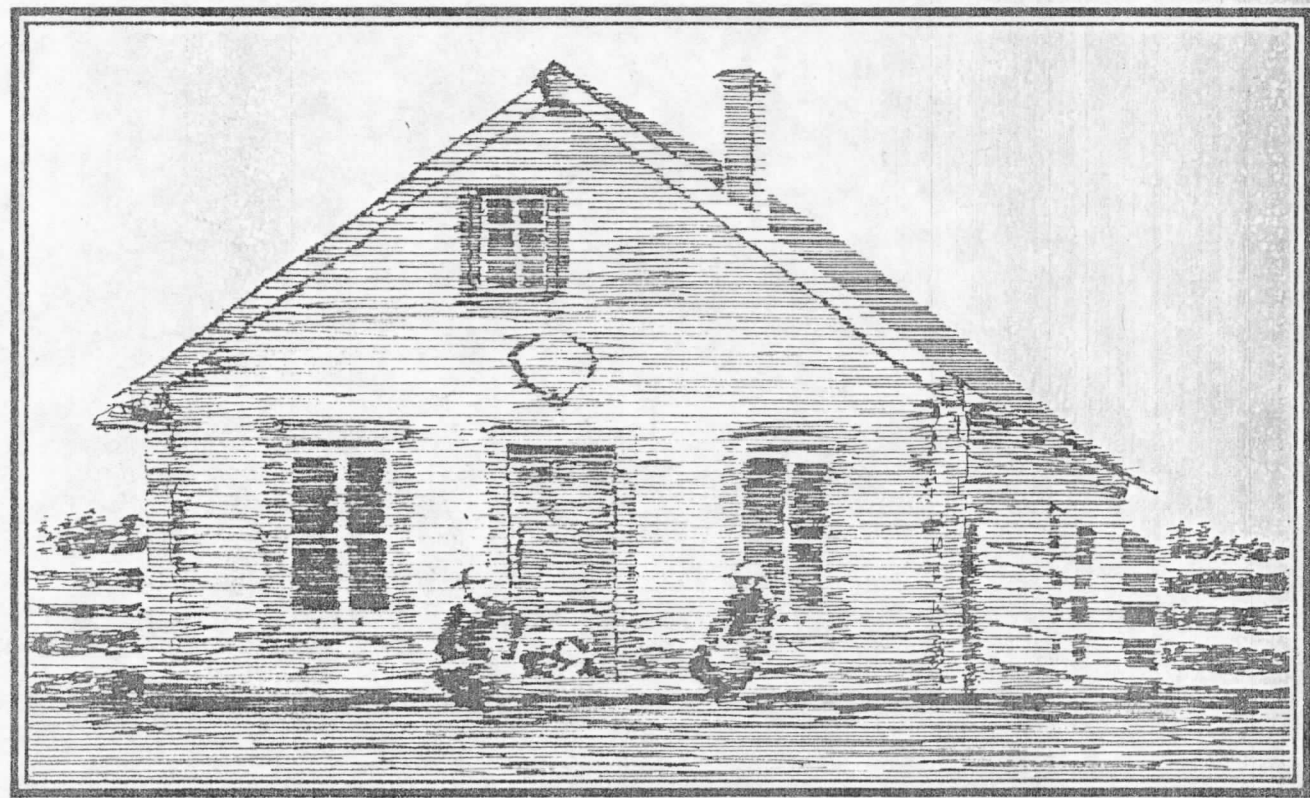


HISTORIC SITES
SERVICE

ARCHAEOLOGICAL INVESTIGATIONS: FORT VICTORIA, 1975

Occasional Paper
No. 3
1977

Timothy C. Losey, et al.



FC
3666
A44
No. 3

INTRODUCTION

Fort Victoria, Alberta, was constructed in 1864 by the Hudson's Bay Company; it was located near the Methodist Mission of George McDougall on the north bank of the North Saskatchewan River, about 70 miles downstream from Edmonton (Figure 1). In 1874, a plan of the post drawn by Richard Hardisty shows seven buildings: the trader's house, trading shop, dairy, stable, general and provisions store, the men's house, and a blacksmith's forge-men's house, all enclosed by a palisade measuring 220 by 134 feet (Figure 2). Ten years later, a survey report (Kanis 1884) containing a small-scale plan shows that the stable had been removed. This plan also suggests that there was a kitchen attached to the rear of the trader's house, and two bastions at the corners of the south wall (Figure 3). After the post had been closed from 1883 to 1887, repairs and renovations were necessary; these were made in 1889. In the fall of that year, Inspecting Officer E.K. Beeston drew a sketch map of Victoria which shows that the dairy had been removed and a new stable had replaced the blacksmith's forge-men's house complex (Figure 4). The new stable may have been built as early as 1884 since a building at that location on Kanis's plan is not labelled. Beeston also mentions a kitchen attached to the trader's house, and a post and rail fence that had been put up in 1888. Following the abandonment of the fort in the outfit of 1897, all buildings were destroyed or removed with the exception of the trader's house. A more complete historical account of Fort Victoria may be found in volume one (1974) of this report, pp. 4 - 7.

The initial proposal to develop the historical resources of Fort Victoria, submitted by W.D. Clark on 10 May 1971, resulted in the establishment of an on-going archaeological research project at the site. Initial archaeological testing for the east palisade was conducted by K. Arnold and D. Gay (Arnold 1971) in 1971. During the same season, W.D. Clark and J.S. Nicks excavated the fill in front of the trader's house (R2M5) to provide information for the reconstruction of the front boardwalk. In the spring of 1974, a six-week University of Alberta archaeology field-school investigated the remains of the trader's shop and press room (R2M6), the dairy (R2M7), and the southwest corner of the pal-

Figure 59

BEADS & PENDANTS

1. Type Ia20 (R2M12C4-89)
2. Type If (R2M13L12-37)
3. Type If (R2M14E3-130)
4. Type If (R2M9K1-93)
5. Type IIa8 (R2M12C1-282)
6. Type IIa13 (R2M9L1-28)
7. Type IVa6 (R2M12B7-186)
8. Jet Pendant (R2M12B7-184)
9. Type WIb16 (R2M14K1-61)
10. Type WIb16 (R2M13L12-38)
11. Type W1c8 (R2M13E7-1)
12. Type W1c8 (R2M14H1-65)
13. Type WIIb (R2M12C3-10)
14. Dangler (R2M13L12-42)
15. Molded Bead (R2M14M3-43)
16. Shell(?) Bead (R2M13L12-41)
17. Bone(?) Bead (R2M9A1-14)
18. Brass Bead (R2M13D2-25)
19. Various Beads from Garment (R2M13L12-48)
20. Pendant (R2M14M2-48)
21. Pendant (R2M13C1-36)



1



2



3



4



5



6



7



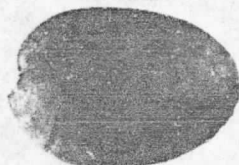
8



9



10



11



12



13



14



15



16



17



18



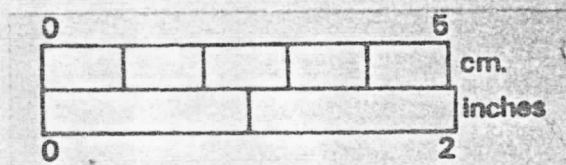
19



20



21



APPENDIX VI:

BEADS

Included in this appendix are beads and pendants. All glass beads have been typed according to the system developed by Kidd and Kidd (1970). Some difficulty was found in matching the bead colours and where this occurred it is shown in table 1 by an incomplete listing of the type designation. One bead, listed in brackets under class II, has a flattened end and may possibly have been mold-made. Lastly, one should note that the several hundred glass beads recovered from a garment in the privy are not included in the bead count. A specimen of each bead type present on the garment is described according to the classificatory system in table 2.

Glass Beads

During the 1975 field season, 49 glass beads were recovered (Figure 42, Table 1). Of these, 11 (22.4%) are class I, six (12.2%) are class II, four (8.2%) are class IV, and 28 (57.1%) are wire-wound. No class III beads were noted in the sample. Only one (2.0%) of the beads is very small (under two mm), six (12.2%) are small (two to four mm), 13 (26.5%) are medium (four to six mm), 15 (30.6%) are large (six to ten mm), and 14 (28.6%) are very large (greater than 10 mm).

The specific bead colours are listed in table 1. When these were grouped into grosser categories the following general colour distribution was found. The exterior bead colours are 33 blue (67.3%), six white (12.2%), three amber (6.1%), three red (6.1%), two black (4.1%), one citron (2.0%), and one wine (2.0%). Of the four class IV beads, two have white cores, one has a yellow core, and one has a green core. Eleven (22.4%) are clear, 19 (38.8%) are translucent, and 15 (30.6%) are opaque. The four class IV beads show two translucent and two opaque exteriors while three have opaque cores and one core is clear.

In shape, five (10.2%) are oval, seven (14.3%) are circular, 25 (51.0%) are rounded, three (6.1%) are tubular, and nine (18.4%) are faceted.

Beaded Garment

The garment, possibly a bag or moccasin, has almost completely decomposed and the bead pattern is disturbed (Figure 1). The pattern probably consisted of four motifs separated by two rows of white beads. The end motifs each consist of a central area composed of seven rows of dark blue beads. Around this are two rows of yellow beads, then two rows of red beads. The central motifs each consist of a main area composed of four rows of white beads. This area is progressively encircled by two rows of amber, two rows of green and two rows of red beads. Separating each motif, and circling the complete design, are two rows of white beads (Figure 1). Although the design is illustrated as if rectangular, the bead rows actually are parabolic.

Miscellaneous Beads (Table 3)

(R2M14M3-43, Figure 59):

This is an opaque red disc-shaped bead similar to type WId, but appears to have a mold seam around the circumference. The bead is eight millimetres in diameter.

(R2M9A1-14, Figure 59):

This bead is similar in shape to that discussed above, but is 12 millimetres in diameter. It is opaque beige in colour.

(R2M13D2-25, Figure 59):

This large bead, similar in shape to class II beads, is made of brass.

(R2M13L12-41, Figure 59):

This is a roughly tubular-shaped shell bead.

Pendants (Table 3)

(R2M12B7-184, Figure 59):

This is a circular black jet pendant and is 11 millimetres in diameter. Both faces are shaped into an eight faceted cone. One edge is pierced for suspension.

(R2M14M2-48, Figure 59):

This faceted opaque red pendant is 37 millimetres long and 20 millimetres in maximum width. The material has not been identified, but is probably a stone of some sort.

(R2M13L12-42, Figure 59):

This mother-of-pearl pendant is 21 millimetres long and 12 millimetres in maximum width. It may have been used to decorate a garment rather than as a pendant.

(R2M13C1-36, Figure 59):

This is a gilt-brass pendant in the form of a capital "A". There is an embossed "leaf" cap at the apex, and a row of embossed dots on each arm, increasing in size from top to bottom. The circle at the top of the pendant for attachment has broken, leaving a hook. The pendant is one inch long and 5/8 inch at widest point.

Table 1. Glass Bead Types

TYPE	SHAPE	SIZE	GLASS	COLOUR	CATALOGUE NUMBER	PROVENANCE
<u>Class I</u>						
Ia18	T	S	tr	Ultramarine	R2M9F1-37	Warehouse: Upper
Ia20	T	S	op	Dark Navy	R2M12C4-89	Midden
Ia20	T	S	op	Dark Navy	R2M12C4-88	Midden
Ic	FA	M	cl	White	R2M9K1-92	Warehouse: Upper
If	FA	M	cl	Rose Wine	R2M9K1-93	Warehouse: Upper
If	FA	M	tr	Bright Navy	R2M13C1-157	SE Palisade: Upper
If	FA	L	cl	White	R2M13L7-63	Privy
If	FA	L	cl	Bright Navy	R2M13L12-37.1	Privy
If	FA	L	cl	Bright Navy	R2M13L12-37.2	Privy
If	FA	L	cl	Amber	R2M14E3-130	SE Palisade: Upper
If	FA	L	cl	Citron	R2M13H1-66	SE Palisade: Upper
<u>Class II</u>						
(II)	(R)	M	op	Bright Navy	R2M12B3-29	Midden
IIa7	C	S	op	Black	R2M12C3-11	Midden
IIa8	OF	L	op	Black	R2M12C1-282	Midden
IIa13	R	M	tr	White	R2M9L1-28	Warehouse: Upper
IIa41	C	M	op	Robin's Egg Blue	R2M10B4-63	Men's House: Lower
IIa41	C	M	tr	Robin's Egg Blue	R2M12C4-86	Midden
<u>Class IV</u>						
IVa6	C	M	op	Redwood (Ext)	R2M12B7-186	Midden
			cl	Apple Green (Core)		
IVa9	C	S	tr	Redwood (Ext)	R2M13L10-77	Privy
			op	White (Core)		
IVa18	C	S	op	Turquoise (Ext)	R2M12C4-87	Midden
			op	White (Core)		
IVa	C	VS	tr	Scarlet (Ext)	R2M13L7-73	Privy
			op	Yellow (Core)		
<u>Wire Wound</u>						
Wib2	R	M	cl	White	R2M13L12-36	Privy
Wib7	R	M	tr	Amber	R2M14E3-129	SE Palisade: Upper
Wib11	R	M	tr	Blue	R2M13L7-64	Privy
Wib11	R	L	op	Robin's Egg Blue	R2M14N9-27	Trash Pits 2 & 3
Wib16	R	VL	tr	Bright Navy	R2M13L7-61.1	Privy
Wib16	R	VL	tr	Bright Navy	R2M13L7-61.2	Privy
Wib16	R	VL	tr	Bright Navy	R2M13L7-61.3	Privy
Wib16	R	L	tr	Bright Navy	R2M13L7-62	Privy
Wib16	R	VL	tr	Bright Navy	R2M13L10-76	Privy
Wib16	R	L	tr	Bright Navy	R2M13L12-38.1	Privy
Wib16	R	L	tr	Bright Navy	R2M13L12-38.2	Privy
Wib16	R	VL	tr	Bright Navy	R2M13L12-38.3	Privy
Wib16	R	VL	tr	Bright Navy	R2M13L12-38.4	Privy
Wib16	R	VL	tr	Bright Navy	R2M13L12-38	Privy
Wib16	R	VL	tr	Bright Navy	R2M14K1-61	SE Palisade: Upper

Table 1 (Cont'd). Glass Bead Types

TYPE	SHAPE	SIZE	GLASS	COLOUR	CATALOGUE NUMBER	PROVENANCE
Wib	R	L	op	Dark Blue	R2M10A1-42	Men's House: Upper
Wib	R	L	op	Dark Blue	R2M13C2-32	SE Palisade: Upper
Wib	R	L	op	Dark Blue	R2M13L1-71	Men's House: Upper
Wib	R	VL	tr	Dark Blue	R2M13L12-39.1	Privy
Wib	R	VL	tr	Dark Blue	R2M13L12-39.2	Privy
Wib	R	VL	op	Dark Blue	R2M13L12-40.1	Privy
Wib	R	VL	op	Dark Blue	R2M13L12-40.2	Privy
Wib	R	L	cl	White	R2M14E4-23	SE Palisade: Lower
Wic8	O	VL	op	Turquoise	R2M13E7-1	Black
Wic8	O	M	cl	Turquoise	R2M14H1-65	SE Palisade: Upper
Wic	O	VL	op	Bright Navy	R2M14E2-28	SE Palisade: Lower
WIIc	FA	M	cl	Amber	R2M14P1-34	Palisade Trench
WIIb	R	L	op	White body with Green dots	R2M12C3-10	Midden

C = circular

FA = faceted

O = oval

OF = oval, faceted

R = rounded

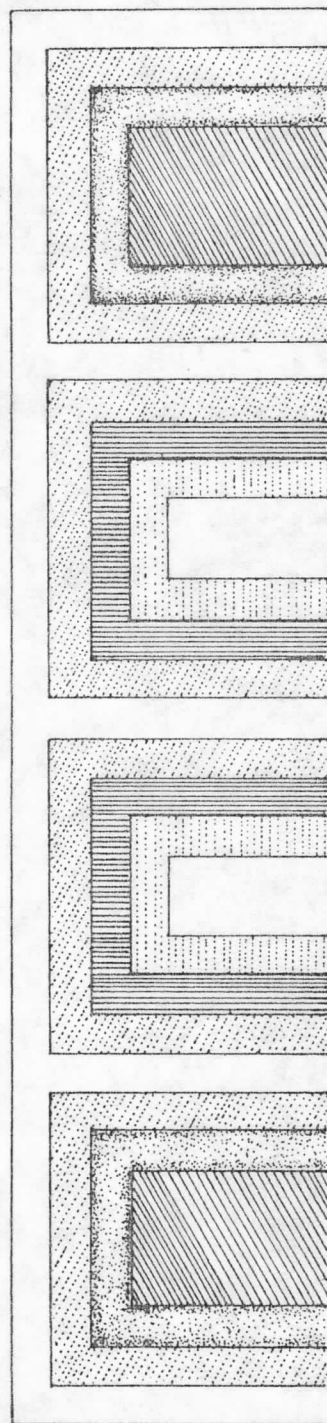
T = tubular

Table 2. Glass Bead Types From Garment

TYPE	SHAPE	SIZE	GLASS	COLOUR	LOCATION
IIa7	C	VS	op	Black (Dark Blue?)	All beads are from a beaded garment. This is catalogued as R2M13L12-48 and is from the privy.
IIa14	C	VS	op	White	
IIa19	C	VS	op	Amber	
IIa23	C	VS	cl	Bright Mint Green	
IIa31	C	VS	op	Turquoise	
IIa20	C	VS	op	Cinnamon	
IIa43	C	VS	op	Bright Blue	
IVa9	C	VS	cl op	Scarlet (Exterior) White (Core)	

Table 3. Miscellaneous Beads and Pendants

TYPE	CATALOGUE NUMBER	PROVENANCE
Bead	R2M14M3-43	Front Gate: Upper
Bead	R2M9A1-14	Warehouse: Upper
Brass Bead	R2M13D2-25	SE Palisade: Lower
Shell Bead	R2M13L12-41	Privy
Pendant	R2M12B7-184	Midden
Pendant	R2M14M2-48	Front Gate: Upper
Pendant	R2M13L12-42	Privy
Pendant	R2M13C1-36	SE Palisade: Upper



COLOUR	NO. OF ROWS
White	2
Red	2
Citron	2
Dark Blue	7
Citron	2
Red	2
White	2
Red	2
Green	2
Cinnamon	2
White	4
Cinnamon	2
Green	2
Red	2
White	2
Red	2
Green	2
Cinnamon	2
White	4
Cinnamon	2
Green	2
Red	2
White	2
Red	2
Citron	2
Dark Blue	7
Citron	2
Red	2
White	2

Bead Pattern
Beads: Fig. 1