

794.

# ANTHROPOLOGICAL SERIES

No. 1

## AN ARCHEOLOGICAL SURVEY OF THE PROPOSED SHENANGO RIVER RESERVOIR AREA IN OHIO AND PENNSYLVANIA

By

WILLIAM J. MAYER-OAKES  
Field Archeologist, Carnegie Museum

ANNALS OF THE CARNEGIE MUSEUM

VOL. 33, ART. 3

(PLATES 3-16, MAPS 1-2)

February 10, 1953

Pittsburgh

pp. 113-124

LIBRARY  
GEOLOGICAL SURVEY  
OF CANADA

The 1934 excavations, however, are easily discernible and with the aid of the sketch map (map 2) it is possible to relocate this site.

#### Site No. 15 on Map 1

36Me15, the site of an historic Indian grave approximately two miles NW of the town of Clarksville, Pennsylvania, would be covered by the full reservoir. The owner, Frank Stewart, Sharpsville, excavated here in 1949 for gravel and uncovered the grave of one individual of the French and Indian War period (Witthoft, n.d.). The skeleton and some of the associated artifacts are now being studied by Witthoft in Harrisburg, while the remainder of the artifacts are on display at Sharpsville High School. Some of the artifacts found with the skeleton are shown in figures 3 and 4.

#### Site No. 16 on Map 1

36Me16 (Hitchcock, no. 21) is an extensive occupation site on the rolling ground about 2000 feet SE of 36Me15. This entire site would be covered by the full reservoir. The owner, Ellis J. Stewart, Transfer, Pennsylvania, has an excellent collection gathered from the surface of this site during the past 50-75 years by himself and his father. This collection, the largest known from the Shenango Reservoir area, comprises the following items, many of which are illustrated in figures 5-14:

GROUND STONE	CHIPPED STONE
2 cylindrical pestles	3 lanceolate points
5 full-grooved axes	297 side-notched points
18 adzes	155 stemmed points
1 beveled adze	86 corner-notched points
9 celts	68 bifurcated-base points
8 bannerstones	18 triangular points
4 gorgets	26 bunts
4 Ohio fireclay tubes	6 plano-convex end scrapers
(2 of blocked-end type)	33 drills
2 grooved pebbles	1 Flint Ridge flake knife
many bi-pitted stones	89 (of 150 originally found)
many hammerstones	Flint Ridge cache blades

About 15 years ago Mr. Stewart unearthed part of a cache of leaf-shaped Flint Ridge blades while plowing the site. They were buried in the blue clay subsoil, evidently in a shallow pit. The following year's plowing turned over the rest of the cache which had originally been composed of about 150 blades. The range in size and shape of the blades still remaining in the Stewart collection is shown in figure 5.

Surface hunting on this site produced many chert flakes as evidence of occupation. The majority were Onondaga and a local dark chert, but a fair amount of Flint Ridge material was gathered. In addition, 3 side-notched points, 3 scrapers, 1 drill base, 1 knife, 1 triangular point and 1 large Flint Ridge core were recovered. Pottery was present but very scarce — four grit-tempered smoothed sherds were found in an area which may represent a midden or concentration of pits.

This site was evidently heavily occupied during two main periods. The Archaic occupation is denoted by the beveled and plain adzes, full-grooved

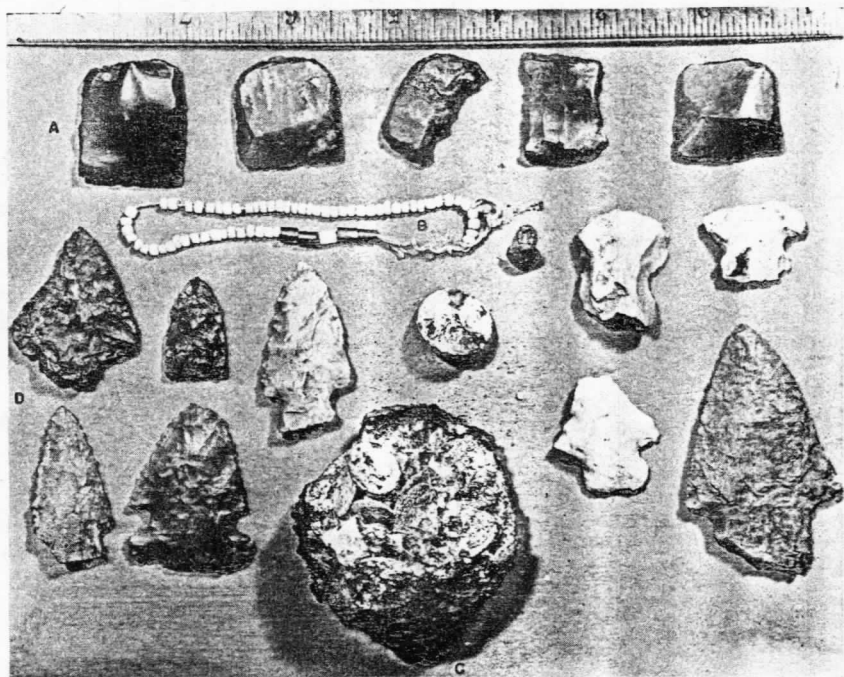


FIG. 3. FLINT, GLASS AND METAL ARTIFACTS FROM HISTORIC BURIAL AT 36ME15  
(Photograph by John Witthoft)

- a. gun flints    b. seed beads    c. vanity case full of wedge-back and pewter buttons  
and silver scrap    d. projectile points, probably not associated