

Publications of the Museum of the
American Indian, Heye Foundation

THE GEORGE G. HEYE EXPEDITION
CONTRIBUTIONS TO SOUTH AMER-
ICAN ARCHEOLOGY

Vol. 1

The Antiquities of Manabi, Ecuador: A Preliminary Report. By Marshall H. Saville. 1907. \$25.00.

Vol. 2

The Antiquities of Manabi, Ecuador: Final Report. By Marshall H. Saville. 1910. \$25.00.

CONTRIBUTIONS FROM THE MUSEUM
OF THE AMERICAN INDIAN,
HEYE FOUNDATION

Vol. 1

No. 1: Lucayan Artifacts from the Bahamas. By Theodoor de Booy. Reprinted from *Amer. Anthropol.*, Vol. 15, 1913, No. 1. 50c.

No. 2: Precolumbian Decoration of the Teeth in Ecuador, with some Account of the Occurrence of the Custom in other parts of North and South America. By Marshall H. Saville. Reprinted from *Amer. Anthropol.*, Vol. 15, 1913, No. 3. 50c.

No. 3: Certain Kitchen-middens in Jamaica. By Theodoor de Booy. Reprinted from *Amer. Anthropol.*, Vol. 15, 1913, No. 3. (Reprinted, 1919.) 50c.

No. 4: Porto Rican Elbow-stones in the Heye Museum, with discussion of similar objects elsewhere. By J. Walter Fewkes. Reprinted from *Amer. Anthropol.*, Vol. 15, 1913, No. 3. 50c.

INDIAN NOTES
AND MONOGRAPHS



A SERIES OF PUBLICA-
TIONS RELATING TO THE
AMERICAN ABORIGINES

VOL. II, No. 3

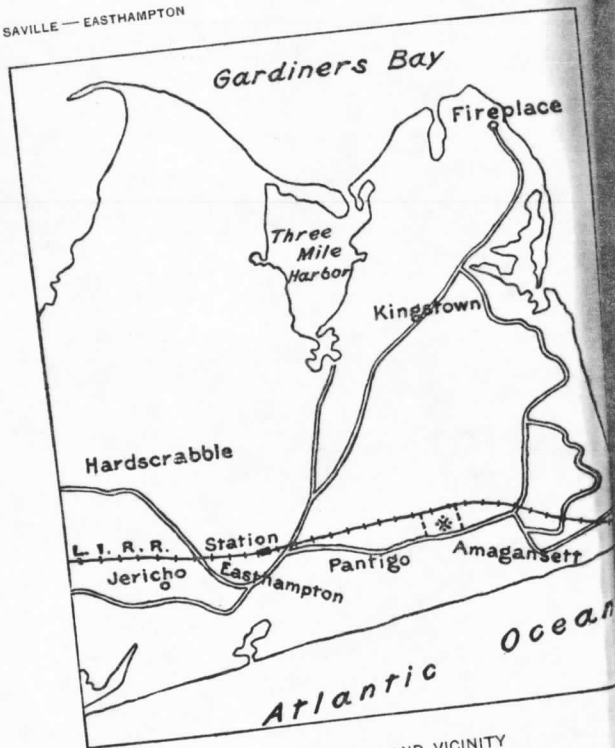
NEW YORK
MUSEUM OF THE AMERICAN INDIAN
HEYE FOUNDATION

1920

pp. 59-102

PL. I

SAVILLE — EASTHAMPTON



EASTHAMPTON AND VICINITY

A MONTAUK CEMETERY AT EASTHAMPTON, LONG ISLAND

BY FOSTER H. SAVILLE

HISTORY

EASTHAMPTON, the most easterly town on Long Island, New York, was first settled in 1648. The town includes the peninsula of Montauk and Gardiners island, as well as the hamlets of Amagansett, Devon, Naprague, Montauk, Freetown, Springs, Wainscot, Accabonack, Jericho, Georgica, and Appaquogue, in addition to other places still retaining a form of their Indian names, such as Copecs, Munchog, Wamponamon, and Pantigo.

The Indian cemetery herein described is situated about two miles east of the village of Easthampton, on the Amagansett road, on the upper part of what is

76	MONTAUK CEMETERY
	<p>other textiles, or in skin or bark, while in eighteen of the graves other accompaniments were found. A number of the skeletons were in poor condition, in many instances only traces of the bones being encountered, while others pulverized on exposure. Fortunately, however, it was possible to recover many of the bones of a number of the skeletons, including several of the skulls.</p> <p>A description of the skeletons that were accompanied with artifacts follows. Unless otherwise noted, the skeletons are those of adults whose skulls were directed eastwardly. As the sand in which the interments were made had been greatly shifted by wind, the depth of burial should be regarded as approximate only and as in no wise significant. The measurement of depth in each case is from the surface to the uppermost part of the skull.</p> <p><i>Skeletons 7 and 8.</i>—This double burial consisted of an adult and a child, $4\frac{1}{2}$ ft. beneath the surface, both flexed, with the adult directed eastwardly, and that of the child, which was eight inches to the</p>
II	INDIAN NOTES

SKELETONS	77
<p>left of the adult skull, toward the south-east. Both lay on the right side and the two had been covered with a blanket. About the neck of the adult was a string of large, dark-blue, glass beads, while a necklace of large, faceted, amber-glass beads was in place on the child. Two inches from the back of the child's skull was a pewter dish, inverted, under which was a piece of woven fabric, while three inches to the right was another pewter dish. Ten inches to the right of the skull of the adult was a pottery vessel of unusual form (fig. 1, a). In the top of the receptacle was the base of a Colonial earthenware vessel with the edge ground. Under and around both skeletons were a large number of white, black, blue, and green glass beads, and some red glass beads with black ends, also three large, light-blue, glass beads, three melon-shaped, corrugated, glass beads, and twelve metal buttons. Eighteen inches above the burial was a white quartz arrow blank.</p> <p><i>Skeleton No. 9.</i>—Four feet below the surface, flexed, lying on its right side on a</p>	<p>✓</p> <p>✓</p>
AND MONOGRAPHS	3

78	MONTAUK CEMETERY
✓	<p>blanket. Four inches east of the skull was a clay trade pipe marked "R. T." (pl. ix, a), as well as a fragment of an iron knife in a wooden handle (pl. xiii, a), and some small blue glass beads strung on a cord.</p> <p><i>Skeleton No. 10.</i>—Four feet below the surface, flexed on its right side on a piece of deerskin, and covered with bark and a blanket. Near the skull was a small deposit of red paint. Four inches from the right side of the skull was a clay trade pipe. Eleven inches beyond the skull was a glass bottle, as well as fragments of a pewter spoon. Six inches to the left of the skeleton was an iron kettle, containing a shallow one of the same material, in which was a small pottery vessel (fig. 1, b). Under the leg bones was a double-toothed brass comb with a string of blue glass and copper beads (pl. xiv, d), two brass buckles (pl. xiv, a, c), twenty-five pieces of wampum, fragments of a wampum belt, and five copper beads. Scattered about the skeleton were a large number of strung blue</p>
✓	
✓	
II	INDIAN NOTES

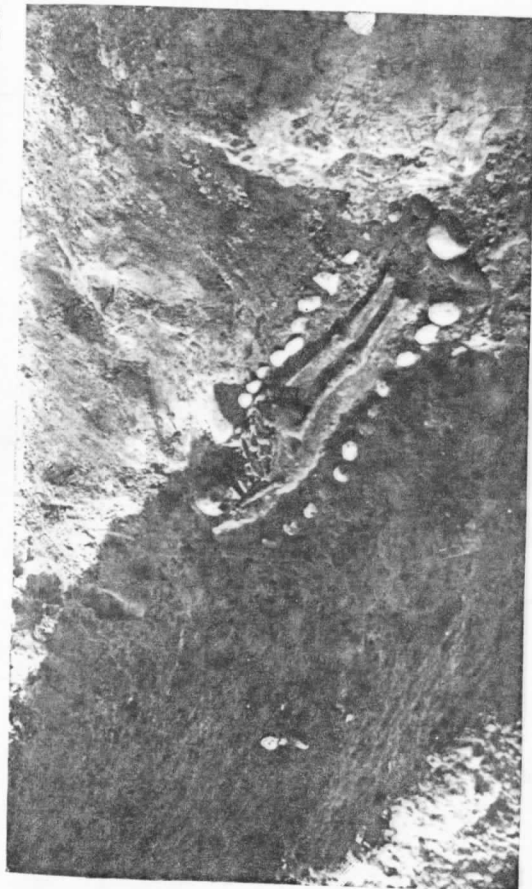
SKELETONS	79
<p>and white glass beads, also some of copper. Eighteen inches above this burial, or two and a half feet below the surface, was a white quartz arrowpoint.</p> <p><i>Skeleton No. 13.</i>—Four and one-half feet beneath the surface, flexed. Six inches to the right of the skull was a small green glass bottle (pl. iv, b), under which was a small pewter dish. Four inches farther was an iron dish, and touching this at the right was a brass one, bound with bark (pl. xi), and containing a silver-plated spoon. Under the spoon were fragments of textile, a piece of copper, and a brass thimble. Nine inches from the right leg bones was a piece of textile (the remains of a bag) on which lay a necklace of shell and copper beads, on one end of which was a brass ring containing strung white and black glass beads. Suspended from the ring is a small copper bell, attached to which is a small, round, brass box. Associated with this burial were a number of turtle-bones, a fragment of a wampum belt, and a large number of</p>	✓
	✓
AND MONOGRAPHS	3

blue, white, black, and green glass beads, and some copper beads (see pl. xv).

Skeleton No. 14.—Three feet below the surface, flexed. Above and around the skeleton were a number of blue, white, and black glass beads, also buttons of lead, black glass, and brass, and copper beads.

Skeleton No. 15.—Three and one-half feet below the surface, lying on its back, legs extended. On the breast was a long, cylindrical, shell bead (fig. 3, a). Twelve inches to the left of the skull were fragments of a pewter dish containing a silver-plated iron spoon (pl. xii, b), and a brass thimble and ring (pl. xiv, b). With this burial were beads of copper, as well as of black, blue, and white glass, mingled with lead and glass buttons.

Skeleton No. 19.—Three feet below the surface, on its back, extended, with the top of the skull directed toward the northeast. At the occiput was a trade pipe of clay (pl. ix, b); around the neck were a number of black glass beads and fragments of brass pins.



BURIAL 21, SURROUNDED WITH PEBBLES

SKELETONS	81
<p><i>Skeleton No. 21.</i>—Four and one-half feet down, body extended on its right side, with right arm in front of face. Almost surrounding the skeleton, six inches distant, was an outline of small beach pebbles, the larger ones at the feet (pl. III). Above this burial were a great many fire-broken stones and much charcoal. Around and near the neck were numerous small glass beads; on the breast was a pin made from two English pennies, dated 1728, also a number of white and orange glass beads, and some metal buttons. ✓</p> <p><i>Skeleton No. 25.</i>—Three and one-half feet below the surface, flexed, lying on a blanket. Around the remains were a number of pewter buttons, also numerous small black, blue, white, and yellow glass beads. ✓</p> <p><i>Skeleton No. 26.</i>—Three and one-half feet deep, legs extended, hands under chin. Twelve inches to the left of the skull was an almost complete yellow china pitcher, three inches to the left of which was a mug of similar ware and ✓</p>	
AND MONOGRAPHS	3

color (pl. vii, *b*, *c*), and between the two a pewter spoon. On the right side of the skull was a razor-blade knife in a bone handle (pl. xiii, *d*), the blade resting against the frontal; at the occiput was a long metal tube (pl. xiv, *e*); under the chin a few black glass beads.

Skeleton No. 27.—A child, 2 ft. 9 in. beneath the surface, lying on its back, with legs extended. Near the chin were a number of black cut-glass button tops, a number of small white and dark blue glass beads, and some square white and pink barrel-shaped beads. Six inches above the burial were evidences of a fire, as the earth was discolored with small pieces of charcoal for an area of four by five feet. *Skeleton No. 29* was directly beneath this burial.

Skeleton No. 28.—Three and one-half feet down, on its back, with legs extended. On the skull was a cylindrical shell bead, four inches long, and a fragment of a metal kettle containing a short-handled spoon and a long-handled one of Sheffield plate marked "R. S." (See fig. 5).



BOTTLES OF DARK-GREEN GLASS
(Height of *a*, 8 $\frac{5}{8}$ in.; *b*, 4 $\frac{7}{8}$ in.; *c*, 6 $\frac{1}{4}$ in.)

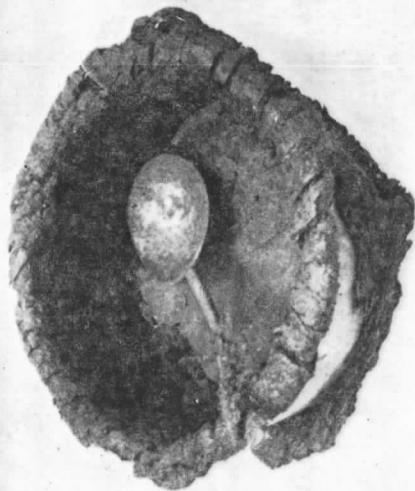
SKELETONS	83
<p>Under the bowl of the shorter spoon was a small, roundish, wooden box (pl. x, b; fig. 6), also a few small white and blue glass beads. Near the skull were a number of small, cylindrical beads of blue glass with white stripes. A number of pewter buttons were found near the skull.</p> <p><i>Skeleton No. 29.</i>—Four and one-half feet in depth, flexed, lying upon a piece of skin. Around the skeleton were a number of pewter buttons. (See Skeleton No. 27.)</p> <p><i>Skeleton No. 30.</i>—The conditions of this burial are identical with those of Skeleton No. 29, except as to location.</p> <p><i>Skeleton No. 31.</i>—Two and one-half feet below the surface, legs flexed, hands at chin. Near the skull were a few large, black glass beads, together with a few brass pins.</p> <p><i>Skeleton No. 32.</i>—Two and one-half feet down, facing east, legs extended, hands across the chest. Six inches to the right of the skull were two metal dishes. Under the skeleton was the shaft-end of a stone arrowpoint. In front of the skull</p>	<p>✓</p> <p>✓</p>
AND MONOGRAPHS	3

fig. 131) contain illustrations of Dutch bottles used for "schnapps," which seem to be identical in form with the bottles herein mentioned, but they are also similar to so-called "sack" bottles which were manufactured at Chiddenfold, Surrey, England, in the eighteenth century, in imitation of those imported from Holland.

Among other objects unearthed by Mr Nelson is a small amber-colored glass pitcher decorated with a band of thread-like white glass on and below the rim. Through the courtesy of Mr Arthur S. Verney, of New York City, this specimen (pl. vi) has been identified as of Venetian origin of an early date.

Some black glass buttons with metal eyes, resembling in shape the present-day shoe-buttons, although about three times as large, were found.

Twenty-five varieties of trade glass beads were found with the burials at Pantigo. They include a string of large faceted amber glass beads, and a number of large green beads covered with pro-



BRASS KETTLE WITH BARK WRAPPING
(Diameter $6\frac{1}{2}$ in.)

jections, causing them to resemble blackberries in form. Other kinds include large black globular, white oval, tiny black cylindrical with red stripes, small red cylindrical, small yellow cylindrical with green stripes, small corrugated black melon-shaped ones, small pink barrel-shaped, and small red beads with black ends. The small and large round beads are white, green, blue, black, garnet, and red. There were also found a number of circular faceted black glass objects without perforation, but which had probably been used as inlays on a variety of buttons.

POTTERY

Among the objects gathered are three pieces of coarse pottery with a yellow base color and a black combed decoration (pl. vii). They consist of a fragment of a pitcher with the handle missing (*b*), a mug (*c*), and the base of a vessel the top of which has been ground off (*a*). We are informed by Mr Reginald Pelham Bolton that fragments of

(d) Seal-top, with baluster ornament, the bowl of which has been ground down. The hallmark is defaced.

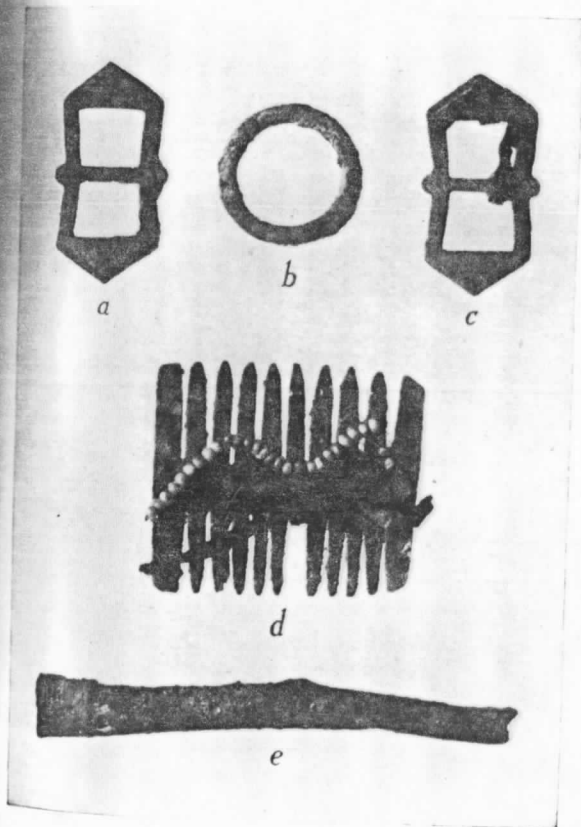
(e) Seal-top, with baluster ornament, the hallmark in the bowl being a lion rampant with crown above and the initials "T. C."

Pewter.—There were also found two shallow pewter dishes, fragments of two pewter spoons, and some buttons of the same material.

Knives.—Parts of four knives similar in type to table knives of the present time were recovered (pl. XIII). One of these (a) has a fragment of its wooden handle attached; two others, (b, c) have their original bone handles, while the fourth (d) has a handle evidently made from a deer antler.

Buttons.—Several kinds of metal buttons were found, mostly of the disc type, made of pewter. There are also in the collection hemispherical buttons of brass and pewter.

Beads.—A number of copper beads, both barrel-shaped and cylindrical, were



VARIOUS TRADE OBJECTS

(Diameter of b, $1\frac{1}{8}$ in.)

encountered; some of the latter were made from copper fragments, and in one piece of beadwork formed a cross design (pl. x, *a*) surrounded with globular black glass trade beads. Some small cylindrical brass beads were recovered. ✓

Miscellaneous.—Among other metal objects were brass thimbles used as ornaments (pl. x, *d*), a pair of brass buckles (pl. xiv, *a*, *c*), a fragment of a small silver religious token, two English pennies of the date 1728, and the handle of a brass spoon that evidently had been cut from part of a kettle.

MISCELLANEOUS TRADE OBJECTS

A fragment of a woven black-and-white glass bead belt was found, likewise a fragment of another woven belt consisting of the same type of black glass beads with small brass cylindrical ones (pl. x, *a*), as above mentioned. ✓

A comb (pl. xiv, *d*), evidently cut from a fragment of a brass kettle, was discovered, and on top of it was a string of

✓

blue glass beads and also a couple of deerskin thongs, one of which has a barrel-shaped copper bead attached to it.

A small wooden box, with the remains of its cover in place, was found without

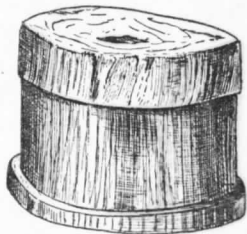
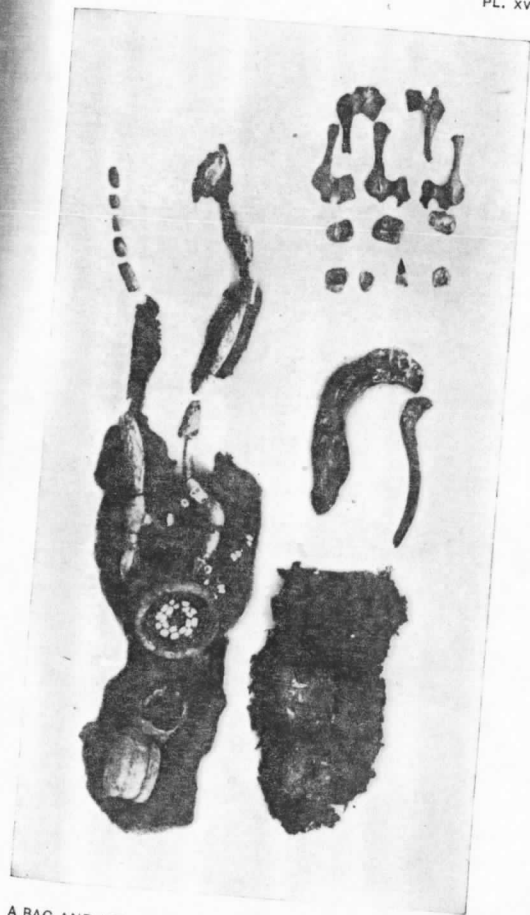


FIG. 6.—Wooden box (five-sixths actual size).

contents. (pl. x, b; fig. 6). This receptacle had probably been circular, but was misshapen when recovered.

About nine inches from the legs of skeleton No. 13 was an ornate neck-piece in a bag, composed of barrel-shaped copper beads alternating with cylindrical beads of shell (pl. xv). At the bottom of this strand is a pendant consisting of a brass ring in which black and white



A BAG AND ITS ACCOMPANIMENTS FOUND IN GRAVE 13

FIREPLACES	101
<p>glass beads have been strung, completely filling it. Pendent from the bottom of this is a copper tinkler containing an iron pellet, below which is attached a small, circular, brass box.</p> <p>FIREPLACES</p> <p>Six fireplaces were discovered in the northern, eastern, and southeastern parts of the burial-ground, the whole forming an angle with its apex toward the east (pl. II). As the fireplaces were much alike, a description of No. 1 will serve the purpose of all. This was eighteen inches below the surface and consisted of about forty bowlders, averaging perhaps twenty pounds in weight, much discolored by fire and arranged in the form of a circle. The fireplaces were three feet in diameter and eighteen inches in depth, and contained twelve inches of ashes and charcoal. On removing the stones, some of them crumbled, having been disintegrated by fire. Fireplace No. 4, the diameter of which was six inches greater, contained fifteen inches</p>	✓
AND MONOGRAPHS	3