

NATIONAL MUSEUM
OF MAN
MERCURY SERIES

MUSÉE NATIONAL
DE L'HOMME
COLLECTION MERCURE



ARCHAEOLOGICAL SURVEY
OF CANADA

PAPER No. 38

ISSN 0316-1854

A DIAMOND JENNESS

MEMORIAL VOLUME

ISSN 0317-2244

COMMISSION ARCHÉOLOGIQUE
DU CANADA

DOSSIER No. 38

VOLUME COMMEMORATIF

DIAMOND JENNESS

THULE ESKIMO PREHISTORY OF CUMBERLAND
SOUND, BAFFIN ISLAND, CANADA

PETER SCHLEDERMANN

NATIONAL MUSEUMS OF CANADA
MUSÉES NATIONAUX DU CANADA
LIBRARY - BIBLIOTHÈQUE

have been impressed on the rear of the bowl facing the smoker. The McDougall Company was founded in 1810, according to Wilson (1961:133), or in 1846, according to Walker (Humphrey 1969). Since permanent whaling stations were established in Cumberland Sound around 1850, most of the contact material probably dates from that time. Two of the clay pipe fragments on Plate 50 (e) have the name "Gambier" impressed around the stem, perpendicular to the long axis. The word "Paris" appears directly below the former. (f) is a bone fork (?) lashed onto a wooden handle with baleen. (g) is a dark green piece of bottle glass, 3 mm in thickness. (h) is a bottle neck rim fragment. (i) is a domino piece composed of wood and ivory sections, held together by a brass rivet. (j) and (k) are representative samples of the glass beads we located, most of which belong to the "tube bead" classification of Kidd (1970:45-89). ✓

Miscellaneous

A number of undiagnostic lithic flakes were located throughout the excavations: (1) 56 ground slate fragments; (2) 101 dark metamorphic rock (phyllite ?) flakes; (3) 52 quartzite flakes; (4) 87 quartz crystal flakes; (5) 103 chert flakes; and (6) 4 pieces of mica.

A total of 285 pieces of undiagnostic bone, wooden, and baleen fragments was located, as well as 14 pieces of caribou, walrus, and seal skin.

Plate 50 Contact material.

<u>Description</u>	<u>Cat. Number</u>	<u>Site</u>	<u>Level</u>
a. Ceramic fragment	MbDj-1-759	A-1	H9,flr.
b. Ceramic fragment	MbDj-1-43	A-1	H10,flr.
c. Ceramic fragment	MbDj-1-758	A-1	H9,flr.
d. Earthenware fragment	MbDj-1-72	A-1	TA1K,15-20cm
e. Pipe fragments	MbDj-1-674	A-1	H9,flr.
f. Fork, bone	MbDj-1-97	A-1	Salvage
g. Bottle, glass	MaDg-2-26	G	H11,flr.
h. Bottle, glass	MbDj-1-712	A-1	H9,flr .
i. Domino piece	MbDj-1-520	A-1	H6,flr.
j. Beads, glass	MbDj-1-650	A-1	TA1L,2-5cm
k. Beads, glass	L1Dj-1-1135	B-1	H2,10-15cm

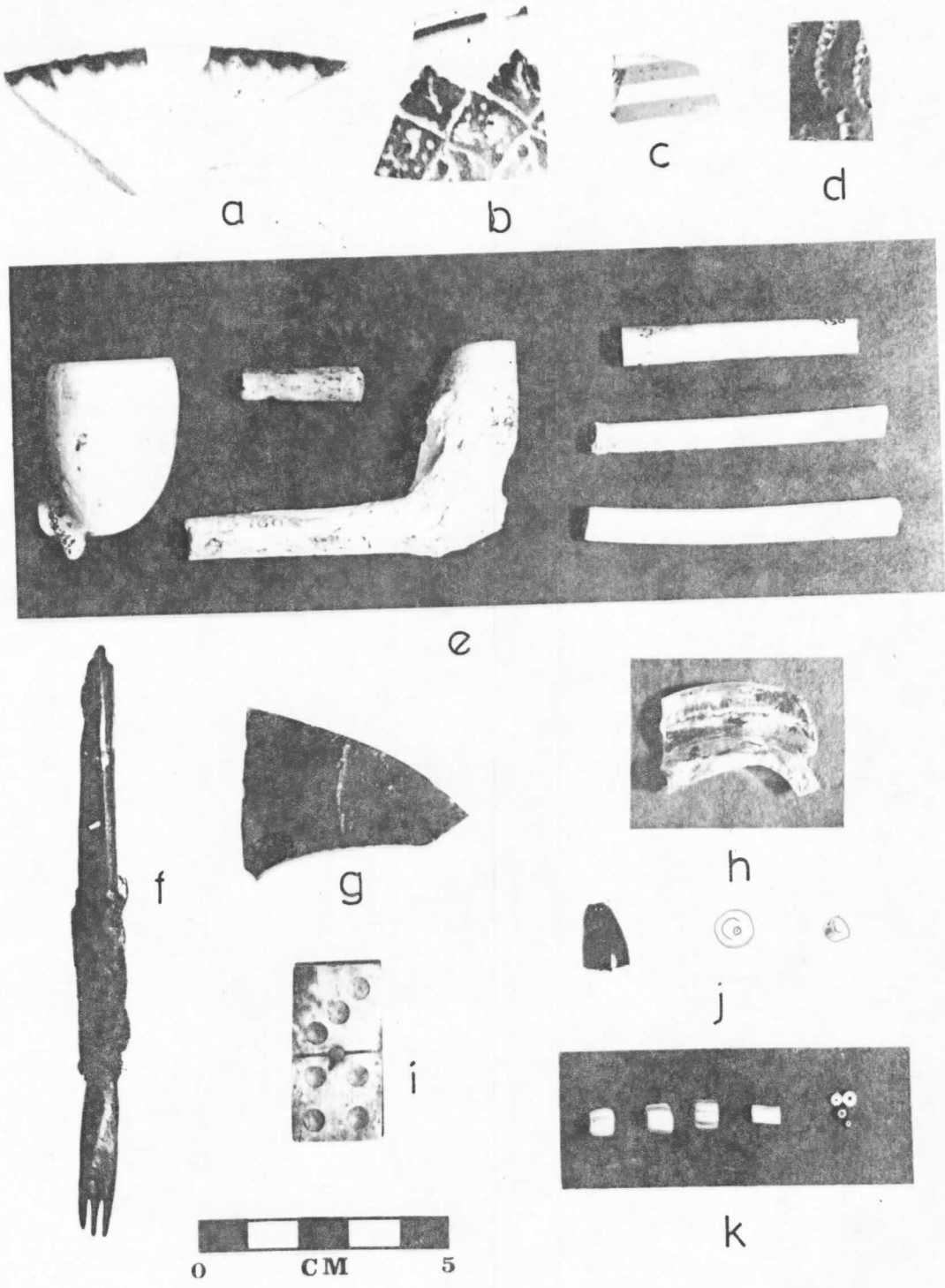


Plate 50