

NEZ PERCE NATIONAL HISTORICAL PARK ARCHAEOLOGICAL EXCAVATIONS, 1979-1980

Part I

✓ Burial Recovery and Monitoring

by

Karl Gurcke

with

Michael Bies, Thomas M. J. Mulinski, and Roderick Sprague

Part II

Water Line Trench Emergency Excavations

by

Caroline D. Carley

with

Priscilla Wegars and Julia G. Longenecker

UNIVERSITY OF IDAHO ANTHROPOLOGICAL RESEARCH MANUSCRIPT SERIES, NO. 70

Laboratory of Anthropology

University of Idaho

Moscow

1981

GLASS TRADE BEADS FROM 10-NP-108B

by

Roderick Sprague

As principal investigator of the project, I took the prerogative of analyzing the beads. Because of the typical administrative pressures, the analysis did not start until hours before the reburial. The result is that, except for Op 3 and all seed beads, no Munsell Color designations were determined (Table 4). The terminology is consistent with that utilized in previous analyses from the Laboratory of Anthropology and as found in a work scheduled for publication in *Historical Archaeology*.

None of the bead types were typical of these found *only* in the first half of the nineteenth century or the twentieth century but several were types found only in the latter half of the nineteenth century. The only beads not previously reported in Nez Perce territory are the three biconical types. To the best of my knowledge, these 6½ beads are unique to North American bead literature. A guess date for the disturbed burials based only the beads would be 1850-70.

TABLE 4

Description of Glass Trade Beads from 10-NP-108B

| Manufacture | N | Shape | Diaph. ¹ | Color | Munsell | Diameter (mm) | x | Length (mm) |
|----------------|---|-----------|---------------------|--------------------|-------------------|------------------|---|----------------|
| 10-NP-108 Op 3 | | | | | | | | |
| Drawn | 1 | seed bead | Op. | white | N 9.5 | 2.2 | | 1.7 |
| | 1 | seed bead | Op. | robins egg blue | 10B 4/8 | 3.6 | | 2.4 |
| | 1 | seed bead | Op. | blue | 5B 4/10 | 3.4 | | 2.1 |
| | 1 | seed bead | Trp. | green | 2.5BG 4/6 | 2.8 | | 3.0 |
| | 3 | seed bead | Op. | Cornaline d'Aleppo | 7.5R 3/12 : N 9.5 | 3.8-4.4 | | 2.3-2.4 |
| | 4 | pony bead | Op. | white | N 9.5 | 3.7-4.6 | | 3.4-4.4 |
| | 7 | pony bead | Op. | Cornaline d'Aleppo | 7.5R 3/12 : N 9.5 | 4.6-5.4 | | 3.0-3.4 |
| Wound | 1 | globular | Op. | white | N 9.5 | 9.3 | | 9.7 |
| | 3 | oval | Op. | white | N 9.5 | 6.4 | | 11.0 |
| | 1 | globular | Tp. | amber | 5YR 7/16 | 6.4 | | 6.7 |

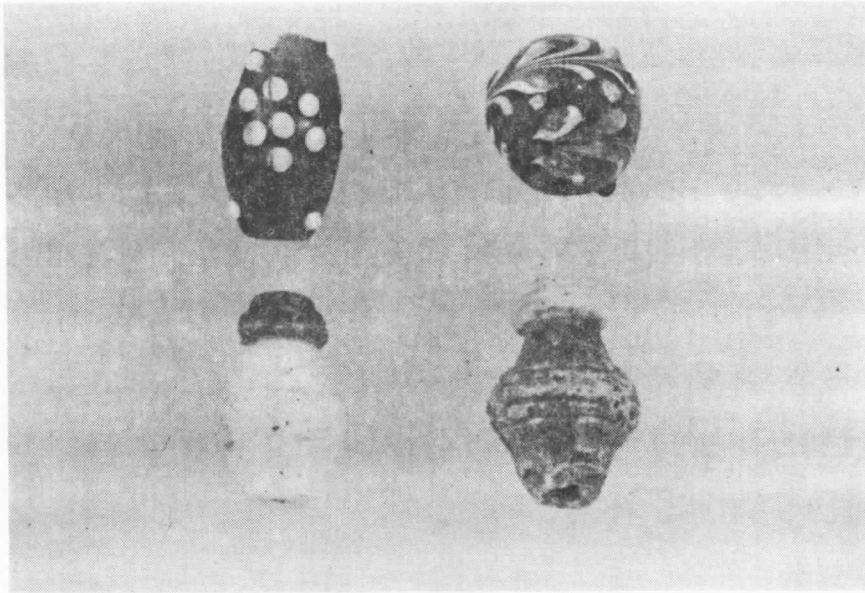
10-NP-108 Op 4

| | | | | | | | | |
|-------|-----|-----------|-----|--------------------|-------------------|---------|--|---------|
| Drawn | 293 | seed bead | Op. | white | N 9.5 | 2.7-3.9 | | 1.8-3.1 |
| | 208 | seed bead | Op. | black | N 0.5 | 2.9-3.8 | | 2.0-3.1 |
| | 60 | seed bead | Op. | robins egg blue | 10B 4/8 | 2.7-3.6 | | 2.2-2.9 |
| | 3 | seed bead | Tp. | dark blue | 7.5B 2/10 | 1.8 | | 1.0 |
| | 3 | seed bead | Op. | dark blue | 7.5B 2/10 | 3.4-3.5 | | 2.5 |
| | 8 | seed bead | Tp. | dark green | 2.5BG 4/6 | 2.6-2.9 | | 2.0 |
| | 1 | seed bead | Op. | yellow | 5Y 8/14 | 1.7 | | 1.4 |
| | 9 | seed bead | Tp. | red | 7.5R 3/12 | 1.8-3.3 | | 1.2-2.2 |
| | 98 | seed bead | Op. | Cornaline d'Aleppo | 7.5R 4/14 : N 9.5 | 3.3-4.4 | | 1.7-3.2 |

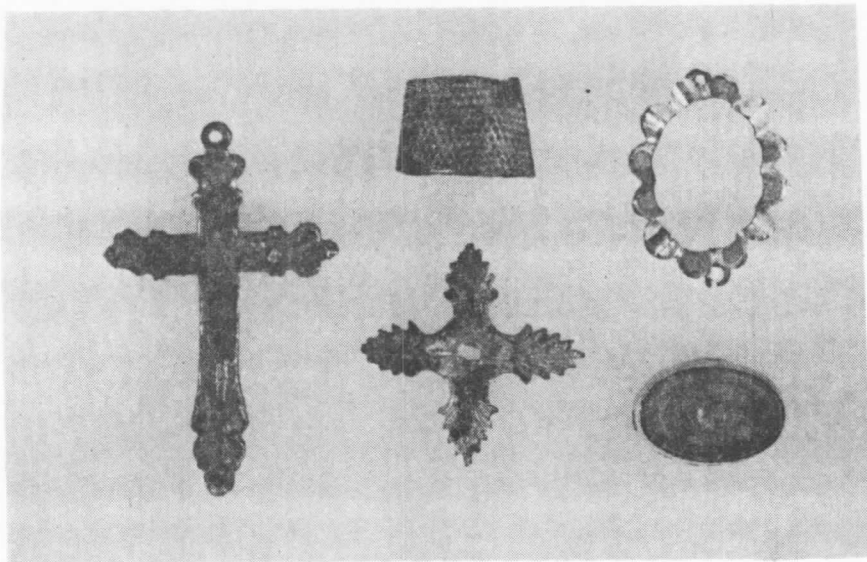
| Manufacture | N | Shape | Diaph. | Color | Diameter (mm) | x | Length (mm) | Comments |
|----------------|----|-----------------|--------|--------------------|------------------|---|----------------|---------------------------|
| 10-NP-108 Op 4 | | | | | | | | |
| Drawn | 3 | pony | Op. | Cornaline d'Aleppo | 5.0 | | 3.7 | |
| | 6 | pony | Tp. | dark green | 4.0-5.0 | | 4.1-5.4 | |
| | 74 | tubular | Op. | Cornaline d'Aleppo | 4.5-7.7 | | 5.4-9.7 | |
| | 15 | tubular faceted | Tp. | clear | 3.6-5.4 | | 34.9-39.2 | |
| | 2 | tubular faceted | Tp. | clear | 4.2-4.4 | | 28.4-28.6 | broken specimens of above |
| Drawn & ground | 8 | tubular faceted | Tp. | milk white | 5.1-6.4 | | 4.6-5.4 | |
| | 1 | tubular faceted | Tp. | light blue | 5.8 | | 4.6 | |
| | 1 | tubular faceted | Tp. | light blue | 7.2 | | 6.8 | |
| | 8 | tubular faceted | Tp. | light blue | 8.7-9.2 | | 7.0-8.2 | |
| | 19 | tubular faceted | Tp. | dark blue | 4.2-5.9 | | 4.6-6.6 | |
| | 21 | tubular faceted | Tp. | dark blue | 6.6-9.2 | | 6.6-8.1 | |
| | 1 | tubular faceted | Tp. | light green | 8.4 | | 3.4 | |
| | 1 | tubular faceted | Tp. | green | 5.6 | | 6.8 | |

| Manufacture | N | Shape | Diaph. | Color | Diameter (mm) | x Length (mm) | Comments |
|-----------------|-------|-----------------|--------|--------------------|------------------|------------------|--|
| 10-NP-108 Qp 4 | | | | | | | |
| Drawn & ground | 1 | tubular faceted | Tp. | green | 7.3 | 6.7 | |
| | 1 | tubular faceted | Tp. | green | 8.4-8.6 | 7.5-7.9 | |
| | 3 | tubular faceted | Tp. | green | 9.2 | 7.5 | |
| | 1 | tubular faceted | Tp. | amber | 6.2 | 5 | |
| Wound | 1 | globular | Op. | white | 5.9 | 5.7 | |
| | 6 | globular | Op. | white | 7.6-7.7 | 10.6-11.1 | |
| | 1 | globular | Op. | white | 9.8 | 8.8 | |
| | 1/2 | globular | Op. | white | 3.8 | 3.4 | with wound indentations |
| | 6 | globular | Op. | Cornaline d'Aleppo | 9.0-10.9 | 9.6-10.4 | |
| | 2 | globular | Op. | Cornaline d'Aleppo | 9.7 | 13.0 | with white dot flower applique decorations on outer red, Fig. 9a |
| | 1 | globular | Op. | Cornaline d'Aleppo | 10.2 | 10.2 | with white swirled combed decoration on outer red, Fig. 9a |
| | 1 | oval | Op. | white | 5.2 | 9.0 | |
| | 1 | oval | Op. | white | 6.5 | 10.7 | |
| | 6 | oval | Op. | white | 6.2 | 5.7-6.4 | |
| | 1 | oval | Op. | Cornaline d'Aleppo | 4.4 | 6.2 | with white applique flowers on outer red |
| | 1 | disk | Op. | white | 6.5 | 2.5 | |
| | 1 | torus | Op. | white | 6.7 | 5.3 | |
| | 1 | barrel | Op. | robins egg blue | 3.6 | 5.4 | |
| | 1 | biconical | Op. | white | 10.3 | 15.9 | with wound decoration around circumference with yellow dots, red winding on one end (clearly only one end) forming biconical area 7.2 in. in diameter, Fig. 9a |
| | 4 1/2 | biconical | Op. | robins egg blue | 6.5-7.0 | 16.7-17.9 | with white winding on one end forming biconical area 8.0-8.3 in diameter, Fig. 9a |
| | 1 | biconical | Op. | white | 10.9 | 13.6 | with red central decoration in white with yellow dots |
| | 29 | globular | Tp. | amber | 6.4-7.6 | 4.7-7.6 | 13 still attached to brass chain (crucifix?) |
| | 1 | globular | Tp. | red | 6.9 | 6.1 | |
| | 13 | globular | Tp. | robins egg blue | 6.2-7.1 | 5.2-5.9 | |
| | 41 | globular | Tp. | dark blue | 5.9-10.0 | 4.1-7.6 | |
| | 8 | globular | Tp. | dark green | 6.4-7.0 | 3.3-6.5 | |
| | 1 | globular | Tp. | dark green | 10.2 | 9.2 | |
| | 7 | oval | Tp. | red | 4.2-5.1 | 5.4-7.6 | |
| | 1 | double oval | Tp. | red | 4.0 | 13.7 | |
| | 1 | torus | Tp. | green | 5.8 | 3.8 | |
| | 1 | torus | Tp. | green | 6.8 | 3.7 | |
| mandrel pressed | 1 | globular | Op. | light blue | 8.7 | 7.4 | |

¹Diaphaneity abbreviations are Op. = opaque and Tp. = transparent. No beads were determined to be translucent.



a



b

Fig. 9. a, Fancy glass beads; b, Rosary crucifix, stamped non-ferrous metal body, length 4.2 cm, quatrafoil leaf ornament, non-ferrous, non-ferrous metal thimble with top end removed, Gold plated scalloped band fits gold plated metal oval with gold flecked glass face below.